

IMPORTANCE OF DATA FOR INFORMED DECISION MAKING

SOLOMON ISLANDS ENVIRONMENT DATA PORTAL

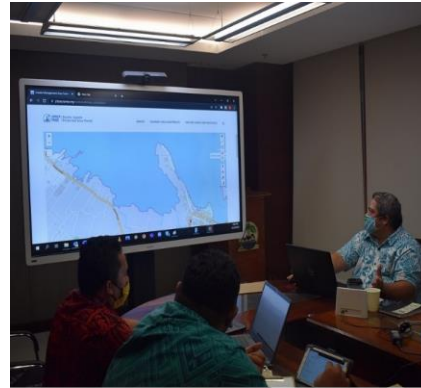


- **Definition:** Environmental data encompasses information related to various aspects of the environment, including air quality, water resources, biodiversity, climate patterns, and more.
- **Importance:** Environmental data serves as a critical tool for understanding, monitoring, and managing impacts on the environment.

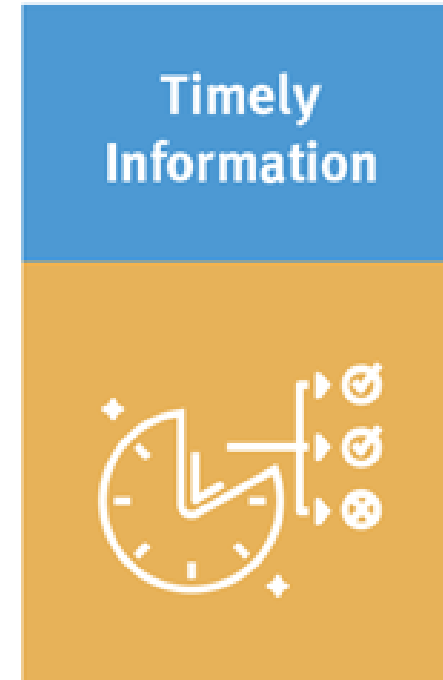
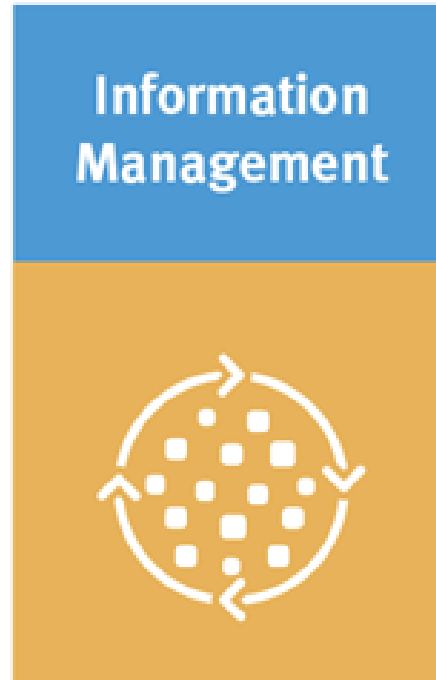
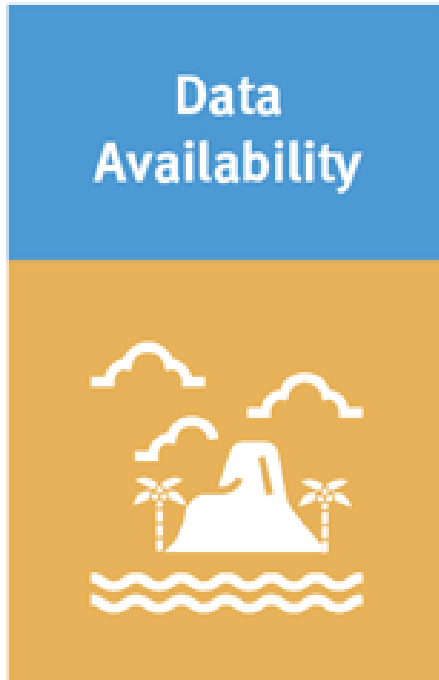
- *“... without information, things are done arbitrarily and one becomes unsure of whether a policy or program will fail or succeed. If we allow our policies to be guided by empirical facts and data, there will be a noticeable change in the impact of what we do.”*

IMPORTANCE OF DATA IN DECISION MAKING

- **Data-Driven Decisions:** Utilizing environmental data enables evidence-based decision-making processes.
- **Risk Assessment:** Environmental data helps assess potential environmental risks and develop mitigation strategies.
- **Long-Term Planning:** Data provides insights for long-term environmental planning and sustainability initiatives.

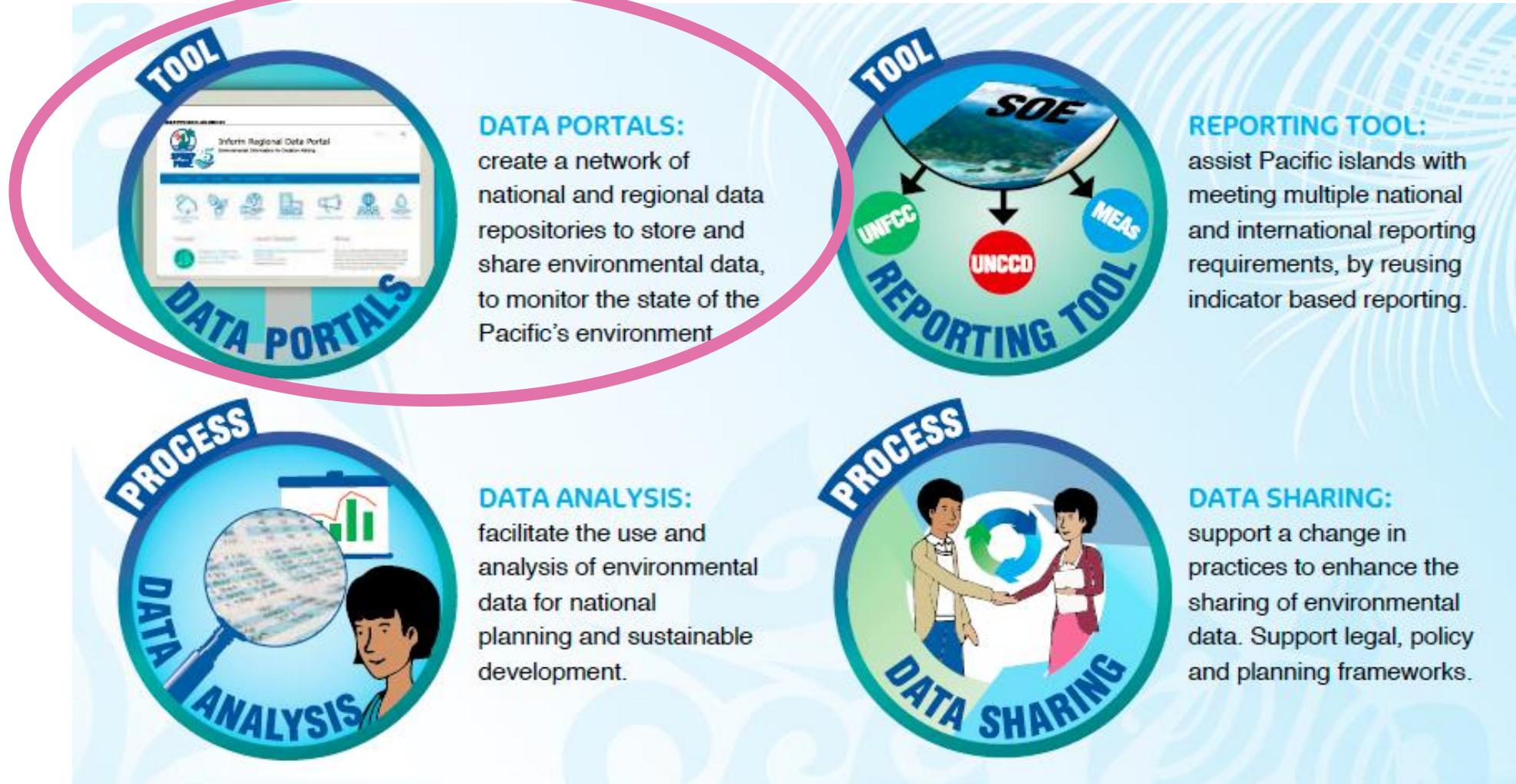


Regional Challenges

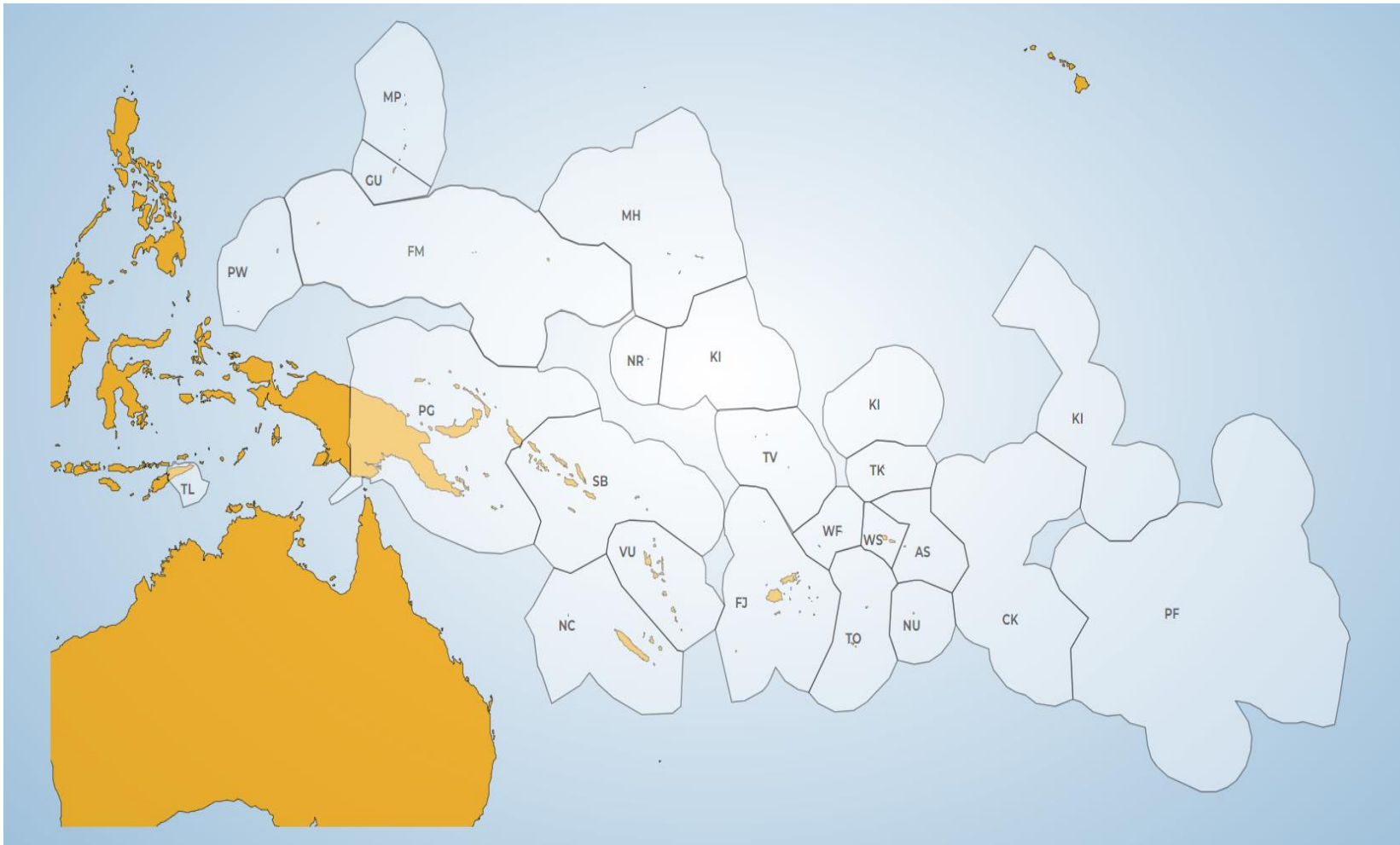


- Lack of data as evidence of the environmental resources, trends and drivers of environmental change
- The need for standard procedures for collecting and aggregating relevant data
- Lack of timely access to available information by those who need it and for sound and informed decision making

Existing Tools for Solomon Islands : Data Portal



Network of Environment Data Portals



- Repository where data is stored (online database)
- Publishing platform
- Data sharing platform on different levels (public/shared/private)
- Open-source tool (DKAN)
- Cloud or in country hosting

1 Regional Portal
14 National Portals



Inform Regional Data Portal
Environmental Information for Decision Making

<https://pacific-data.sprep.org/>



Cook Islands Environment Data Portal
Environmental Information for Decision Making



Papua New Guinea Data Portal
Environmental Information for Decision Making



Niue Environment Data Portal



Federated States of Micronesia Environment Data Portal



Republic of Marshall Islands Environment Data Portal
Environmental Information for Decision Making



Fiji Environment Data Portal
Environmental Information for Decision Making



Kiribati Environment Data Portal
Environmental Information for Decision Making



Nauru Environment Data Portal
Environmental Information for Decision Making



Palau Environment Data Portal
Environmental Information for Decision Making



Samoa Environment Data Portal



Solomon Islands Environment Data Portal
Environmental Information for Decision Making



Tonga Environment Data Portal
Environmental Information for Decision Making



Tuvalu Environment Data Portal



Vanuatu Environment Data Portal
Environmental Information for Decision Making

Pacific Environment Portal – <https://pacific-data.sprep.org/>



PACIFIC ENVIRONMENT DATA PORTAL
Environmental Information for Decision Making

DATASETS ABOUT EXPLORE SPATIAL DATA STORIES DOCS DASHBOARDS ▾

LOG IN

MENU

Enter search term



Topic

- All -

Content

- All -

Country

- All -

Popular search terms

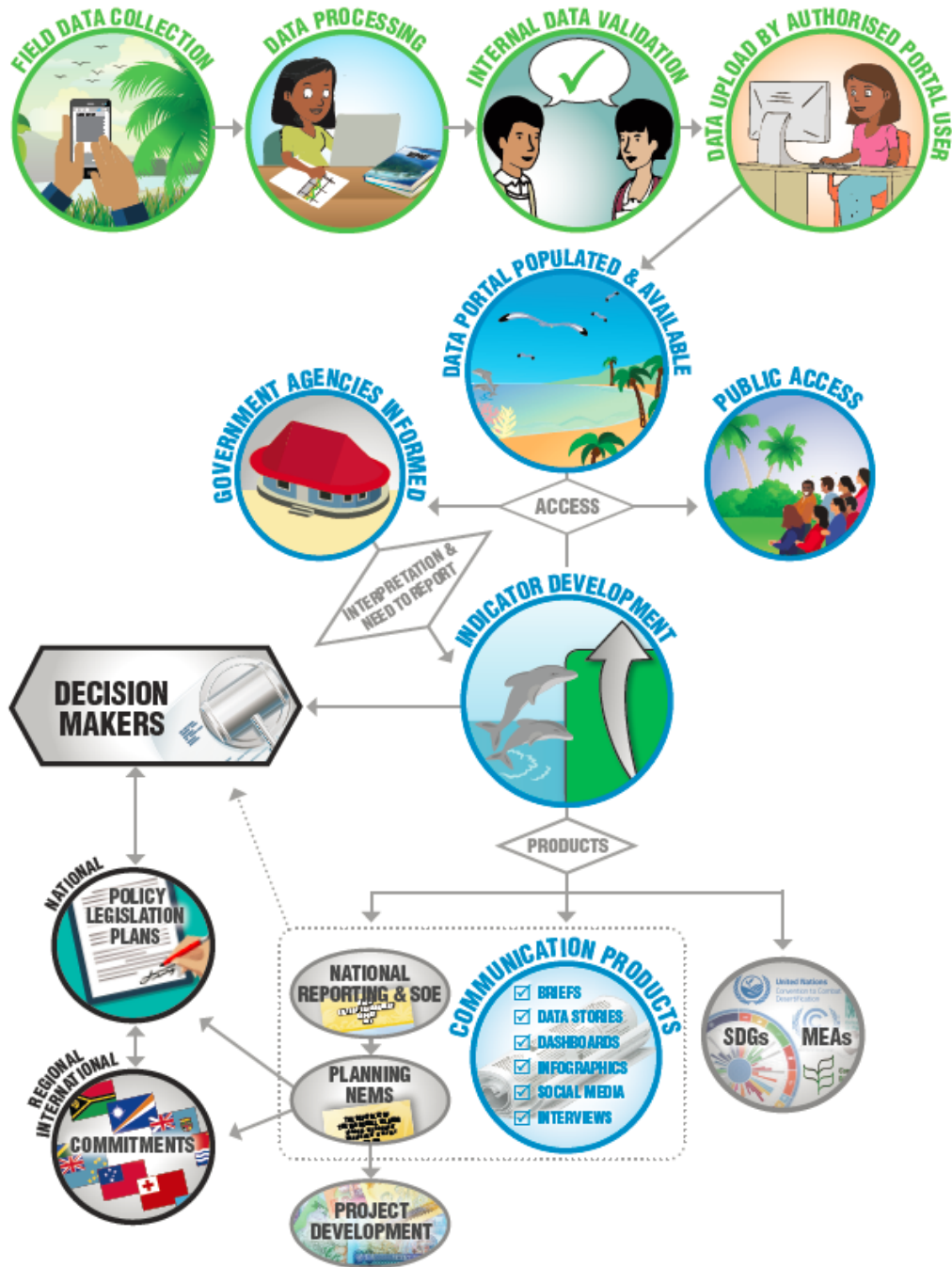
fiji water resource and wastewater management	fiji	2010
(152839)	(94058)	(48335)

f

t

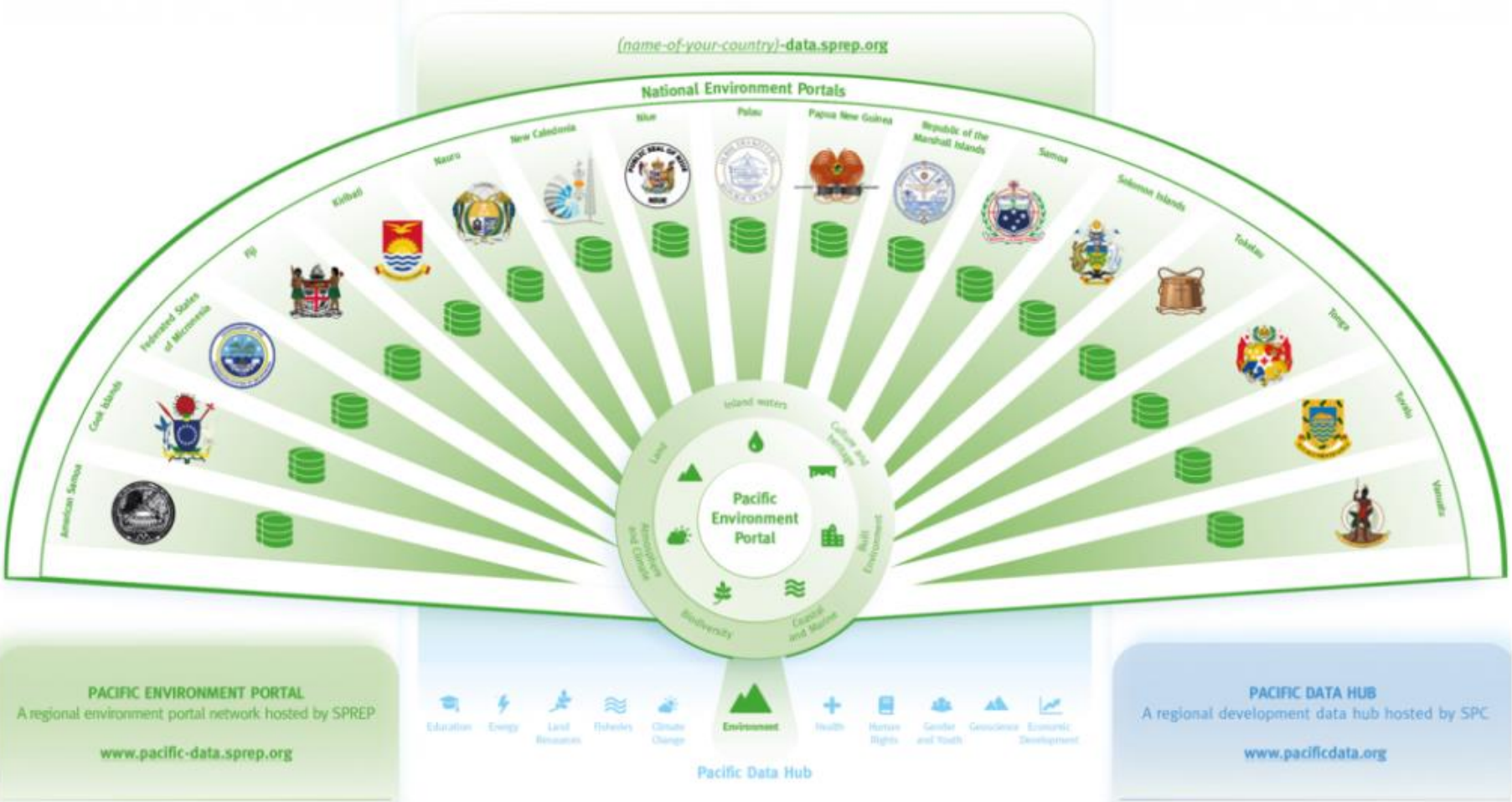
in

e



- **Making data discoverable** - Providing the infrastructure *and* process for reliable, cross-system metadata management and access
- **Making data accessible** - make data easily and quickly accessible to technical and non-technical users
- Making data reliable

Pacific Data Ecosystem



Multilateral Environmental Agreement
NEGOTIATOR'S HANDBOOK
PACIFIC REGION 2013

SPREP PROE

COP17 CMP7
United Nations
COP17 CMP7
JUBA, SOUTH AFRICA

Logos: THE UNIVERSITY OF AUCKLAND, UNEP, ACP MEAS 2, SPREP, UN, ACP MEAS 2

THE REPUBLIC OF THE MARSHALL ISLANDS
NATIONAL ENVIRONMENT MANAGEMENT STRATEGY
2017-2022

Logos: UNEP, SPREP, ACP MEAS 2

CONSERVATION LAWS IN SAMOA
GUIDEBOOK

Logos: UNEP, CRITICAL ECOSYSTEM, EUROPEAN UNION, SPREP PROE

Environmental Impact Assessment Guidelines
for Coastal Tourism Development in Pacific Island Countries and Territories

Logos: SPREP PROE, ACP MEAS 2, SPREP

STATE OF ENVIRONMENT AND CONSERVATION IN THE PACIFIC ISLANDS
2020 REGIONAL REPORT

ENVIRONMENTAL INDICATORS GUIDEBOOK
PACIFIC ISLAND COUNTRIES

Logos: SPREP PROE, gmf, UN, SPREP, Inform

Good Practice Guidelines
in Environmental Impact Assessment
for Coastal Engineering in the Pacific

Logos: SPREP, ACP MEAS 3, UN

State of Environment and Conservation in

SOLOMON ISLANDS STATE OF ENVIRONMENT REPORT 2019

Assessing the SOEC

- Environmental Governance
- Land
- Coastal and Marine
- Conservation and Protection
- Biodiversity
- Atmosphere and Climate
- Built Environment
- Data and Knowledge Resources

Logos: SPREP PROE, UN, ACP MEAS 2

STRENGTHENING ENVIRONMENTAL IMPACT ASSESSMENT
Guidelines for Pacific Island Countries and Territories

Logos: SPREP, ACP MEAS 2, UN

THE NATIONAL ENVIRONMENT STRATEGY
FIJI

Cook Islands

The Federated States of Micronesia

Republic of the Marshall Islands

Tuvalu

nems
Natural Environment Management Strategy

Logos: SPREP, UN, ACP MEAS 2

Introduction to the Solomon Islands Environment Data Portal

SOLOMON ISLANDS ENVIRONMENT DATA PORTAL
Environmental Information for Decision Making

DATASETS ABOUT EXPLORE SPATIAL DATA STORIES DASHBOARDS HELP & SUPPORT

LOG IN

MENU

SEARCH

Enter search term

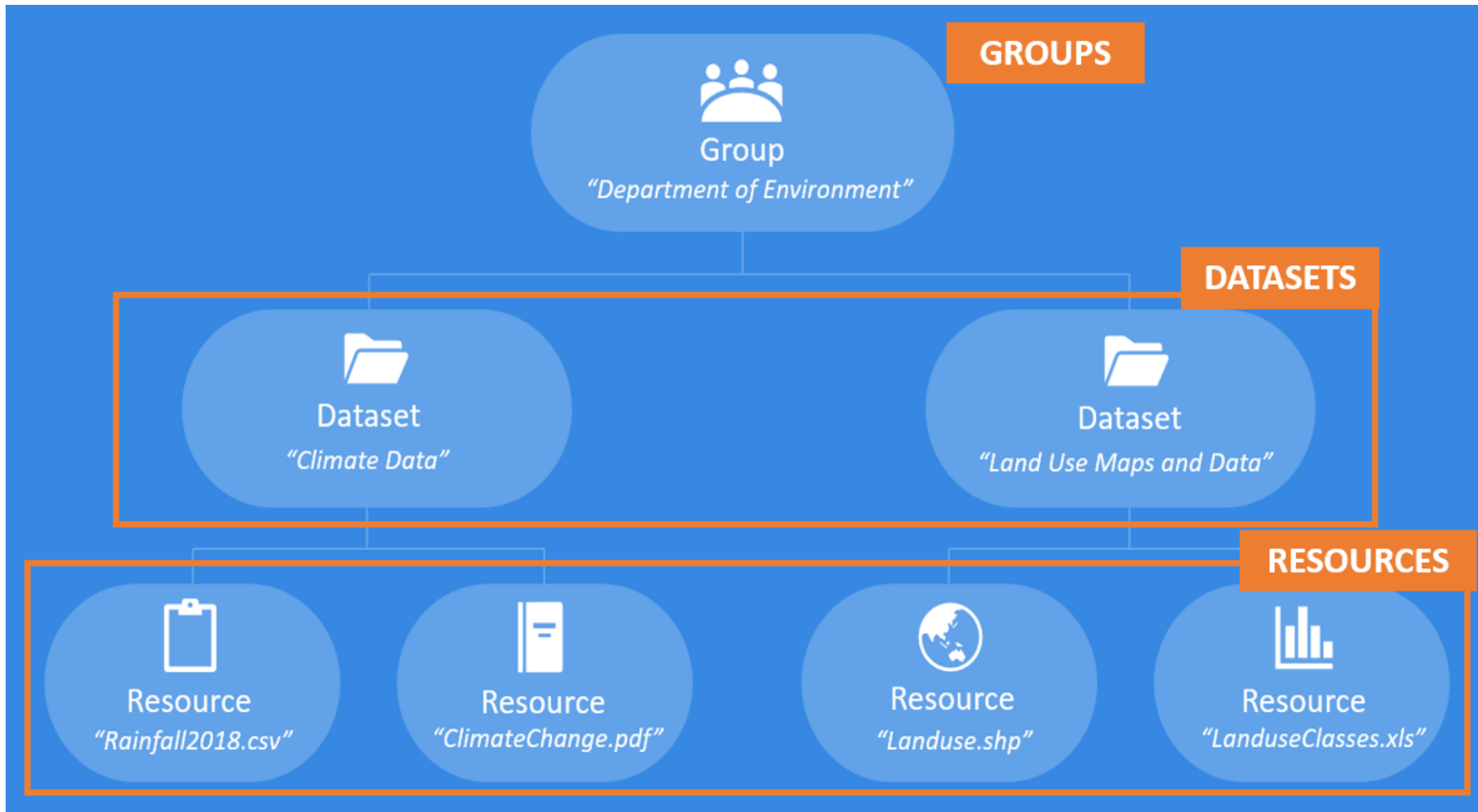
Topic - All - Content - All -

Popular search terms

marine pollution (37001) honiara (9147) urban settlement (7628)

<https://solomonislands-data.sprep.org/>

Portal Building Block:



DATASET



Data on Waste Disposal Modes : Honiara

 *Solomon Islands Ministry of Environment, Climate Change, Disaster Management and Meteorology*

 Atmosphere and Climate

... The Government **waste** collection was used by 36% of households to dispose of ... was used by 23% of all households as their main means for **waste** disposal, followed by disposing it into the backyard (18%). Ten percent and 8% dumped their **waste** into a river/stream or the sea, and another 8% buried ...

CSV

XLSX

RESOURCE

Data on Waste Disposal Modes : Honiara

1) ADD DATASET



Solomon Islands Ministry of Environment, Climate Change, Disaster Management and Meteorology

To provide an enabling environment for the socio-economic development of the Solomon Islands through the application of necessary safeguards with regard to sustainable use of natural resources, the provision of meteorological services, reducing the risk and impact of climate change and other hazards to communities, leading and managing disaster preparedness and their consequences.

The MECDM has 4 Divisions and 1 Office which include: Climate Change Division (CCD), Corporate Services Division, Environment & Conservation Division (ECD), Meteorological Services Division, National Disaster Management Office (NDMO)

License

Private

[OPEN DATA](#)

LICENSE LEVEL

View Add Resource Edit Delete

Atmosphere and Climate

The Government waste collection was used by 36% of households to dispose of their rubbish. Burning was used by 23% of all households as their main means for waste disposal, followed by disposing it into the backyard (18%). Ten percent and 8% dumped their waste into a river/stream or the sea, and another 8% buried their waste.

Data and Resource



Waste Disposal Modes Data

Download

Excel Version of the Data

The excel and graphical presentation of the...

Download

waste waste disposal modes

2) ADD RESOURCES

Field	Value
Publisher	Solomon Islands Ministry of Environment, Climate Change, Disaster Management and Meteorology
Modified	15 February 2022
Release Date	08 June 2021
Source URL	http://www.statistics.gov.sb/
Identifier	83273039-3ca3-4990-a3a2-03e58a90461a
Spatial / Geographical Coverage Location	Solomon Islands
Relevant Countries	Solomon Islands
Language	English
License	Private OPEN DATA
Author	Solomon Islands National Statistical Office
Contact Name	Solomon Islands National Statistical Office
Contact Email	social@mof.gov.sb

3) ADD METADATA

ONLINE PORTAL SESSION/DEMO:

Web address : <https://solomonislands-data.sprep.org/>

- I. Top right Corner - please login using your email and the following password:

solomonIslandsPortal24!

GOOD DATA PRACTICES

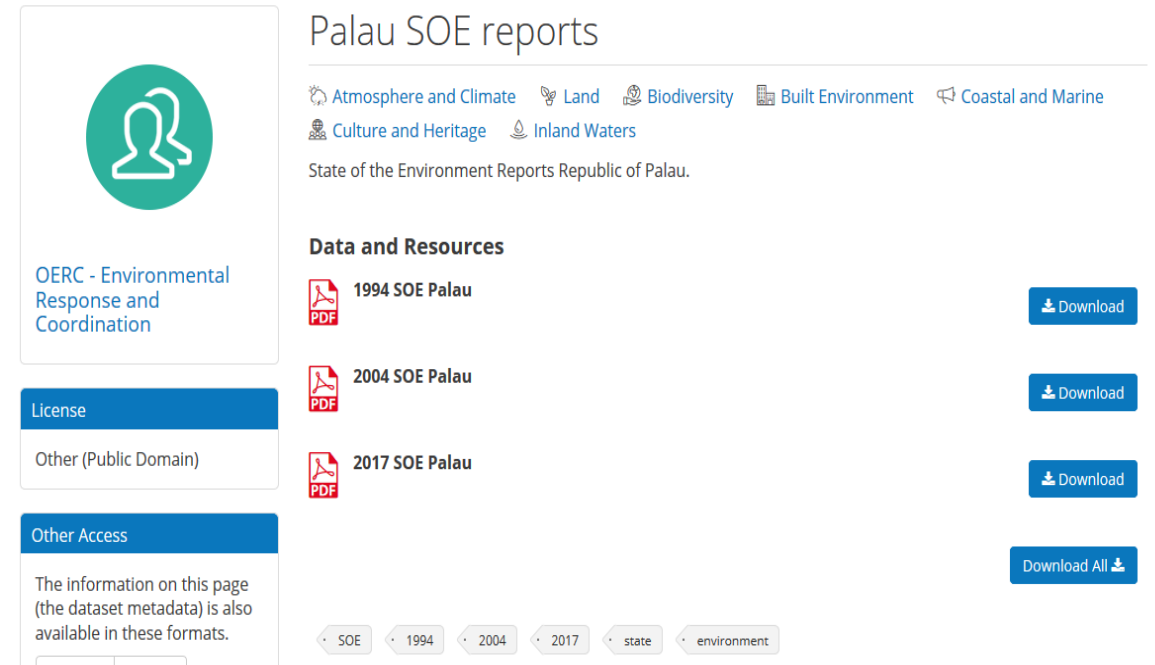
Avoid double data

- Check the portal to see if the same dataset has already been uploaded
 - Do a quick search by using keywords
- Maybe your new data **resource** is best placed under an existing **dataset**?
 - Examples:
 - You are uploading a new version of the same data
 - You found a report that provides background information on raw data in Excel already uploaded to the portal.

Consider grouping your data resources

- Group different resources under one dataset, when relevant
- Be aware of not grouping too much
- Only group resources when they are **strongly related**
- Avoid that other users are not able to find your data

A good example of grouping different resources :



Palau SOE reports

Atmosphere and Climate Land Biodiversity Built Environment Coastal and Marine
Culture and Heritage Inland Waters

State of the Environment Reports Republic of Palau.

Data and Resources

1994 SOE Palau [Download](#)

2004 SOE Palau [Download](#)

2017 SOE Palau [Download](#)

[Download All](#)

SOE 1994 2004 2017 state environment

OERC - Environmental Response and Coordination

License

Other (Public Domain)

Other Access

The information on this page (the dataset metadata) is also available in these formats.

Metadata are crucial

- It is not mandatory, but really good practice to take the time to add additional data about the dataset.
- → Other users will know who can be contacted, when the dataset was collected, what to be aware of when using the dataset etc.