

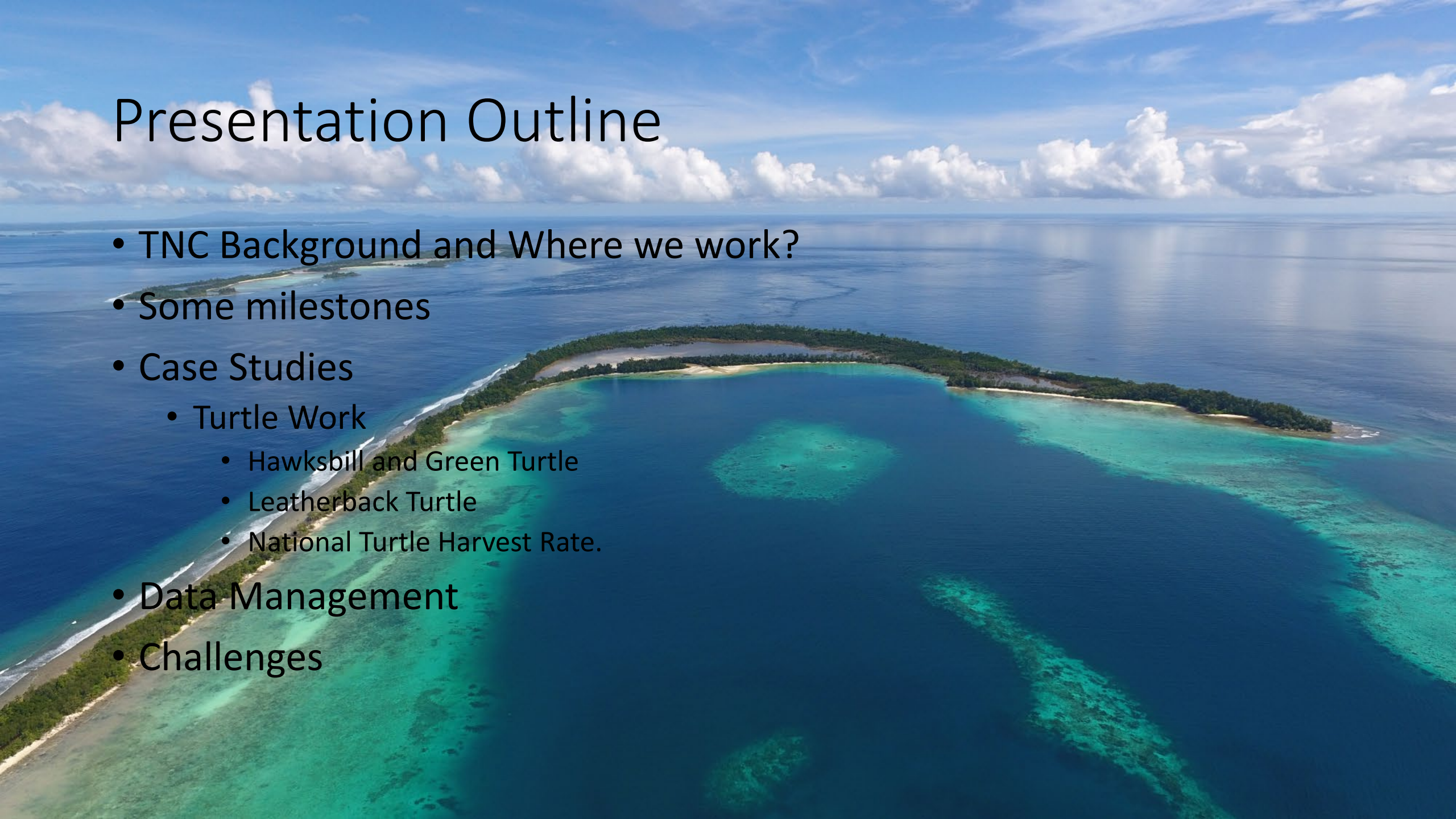
Strengthening Decision Making in Environmental Management

The Nature Conservancy
Simon Vuto & Willie Atu



Presentation Outline

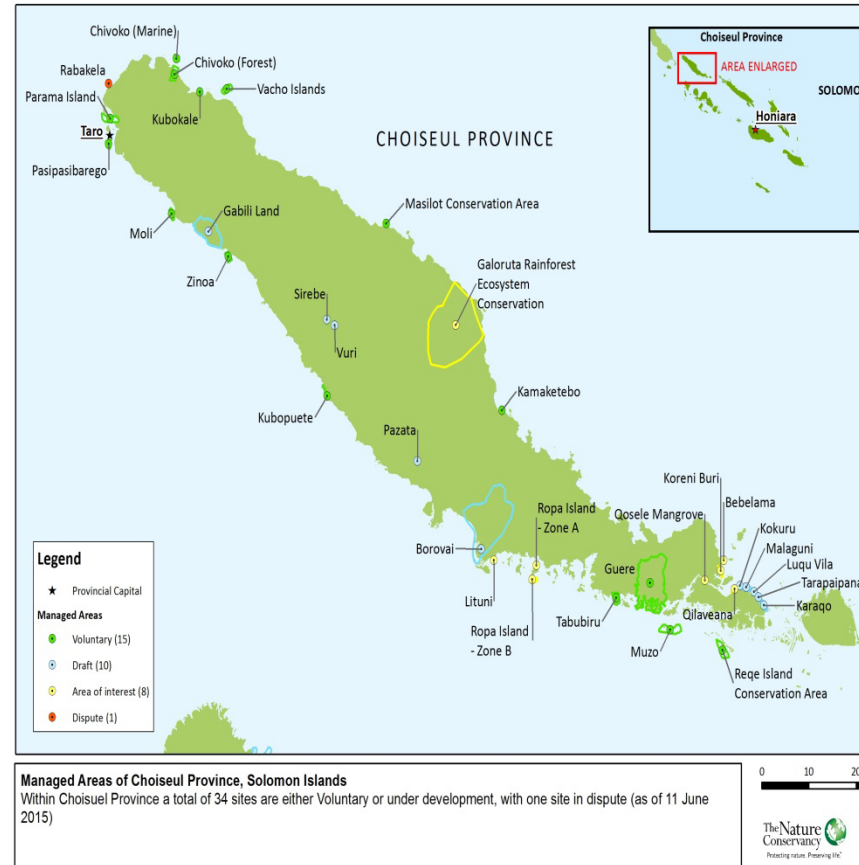
- TNC Background and Where we work?
- Some milestones
- Case Studies
 - Turtle Work
 - Hawksbill and Green Turtle
 - Leatherback Turtle
 - National Turtle Harvest Rate.
- Data Management
- Challenges



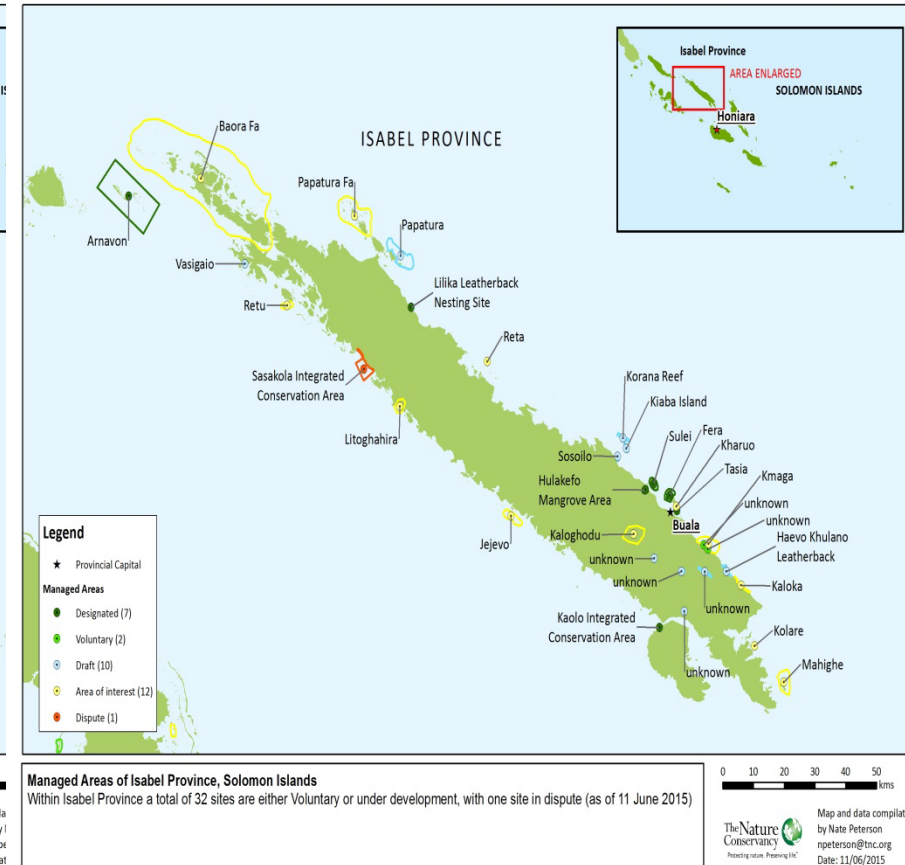
TNC and Where we Work?

- Global Env'tal NGO that works to Protect the land and water that life depends on.
- Establish in SI since 1993 through MOU.
- Arnavon Marine Park
 - Site specific.
- Ridge to Reef Concert.
 - Mapping

Choiseul Province



Isabel Province

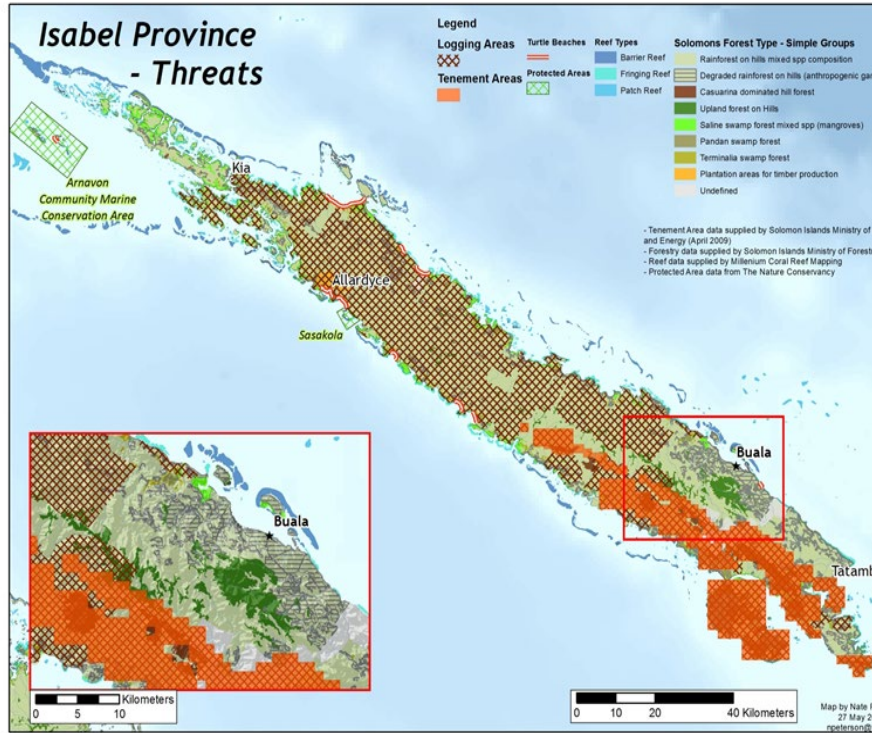


What we're doing in Solomon Islands?

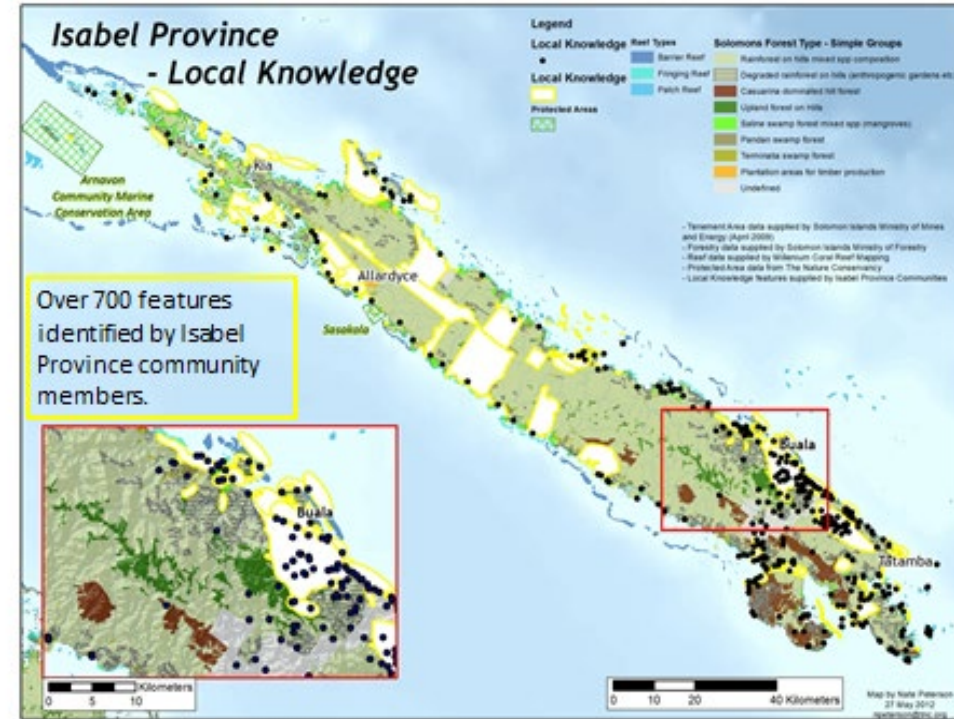
- Support the local communities, provincial and National Government since 1993 to protect their Resources – Conservations.
- 2004 Rapid Marine Assessment - Resulted in SI joining Coral Triangle Initiatives (CTI).
- Awareness on Mining and National Mining Forum
 - Resolution helps to the establishment of Mineral Policy.
- Fund and support the pilot study on the Electronic Monitoring on Longline tuna – Ministry of Fisheries and Marine Resources.
- Review and make submissions on EIA or EIS.

Isabel Province

Ridges to Reef Conservation Plan

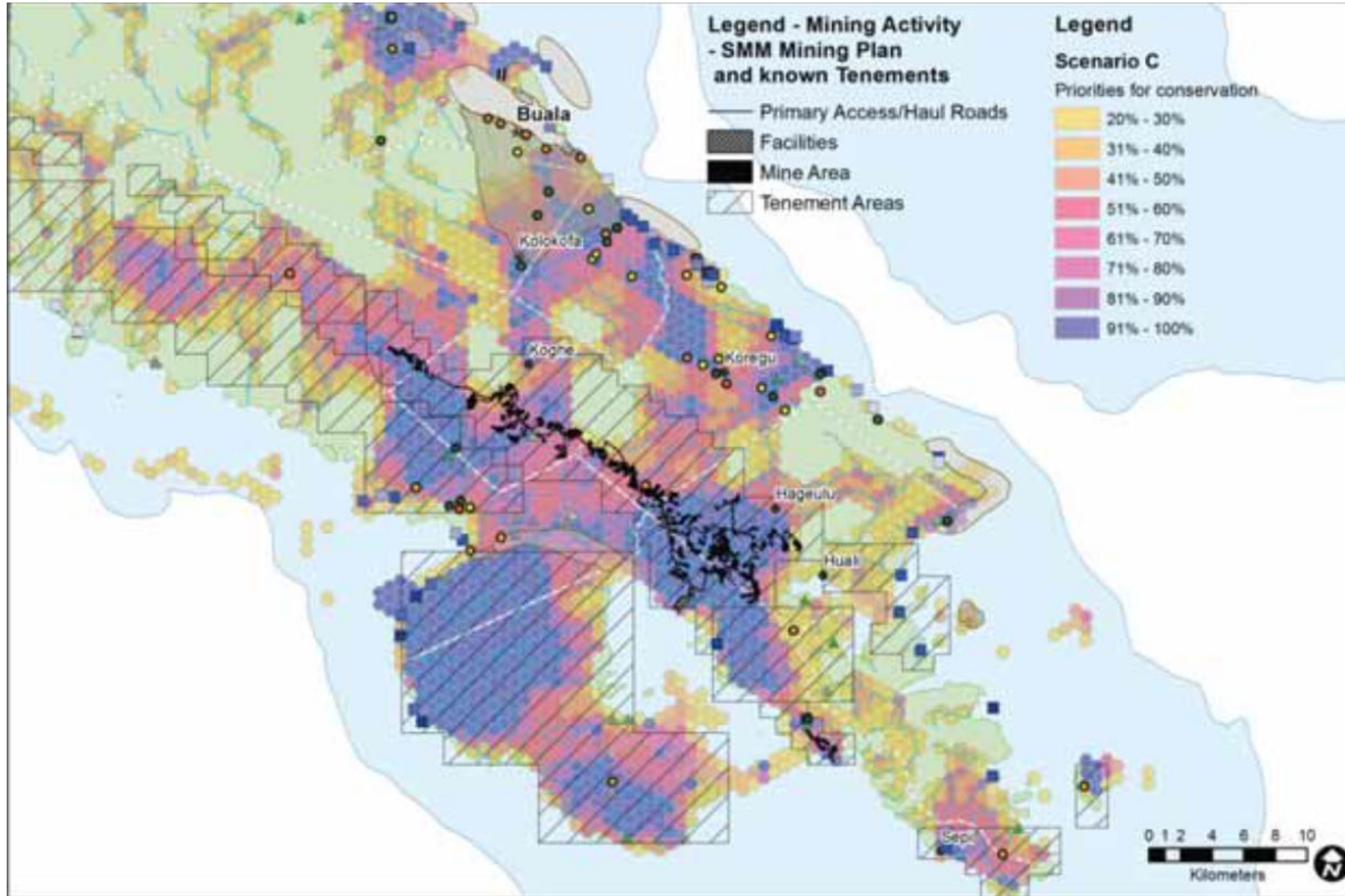


Threats



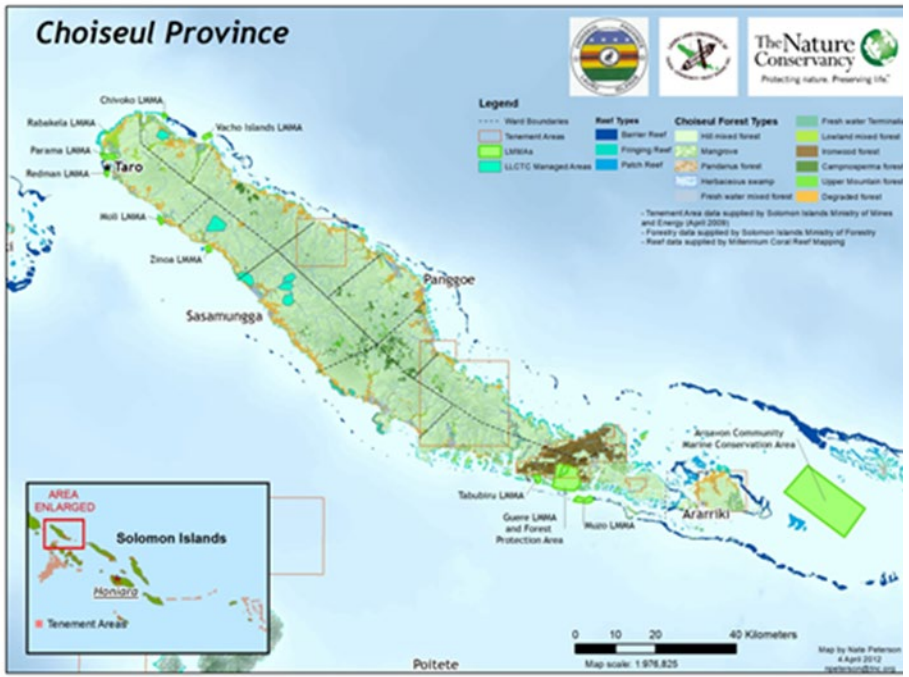
Cultural Sites

Mining Tenement Areas are right on important Biodiversity and Cultural Sites

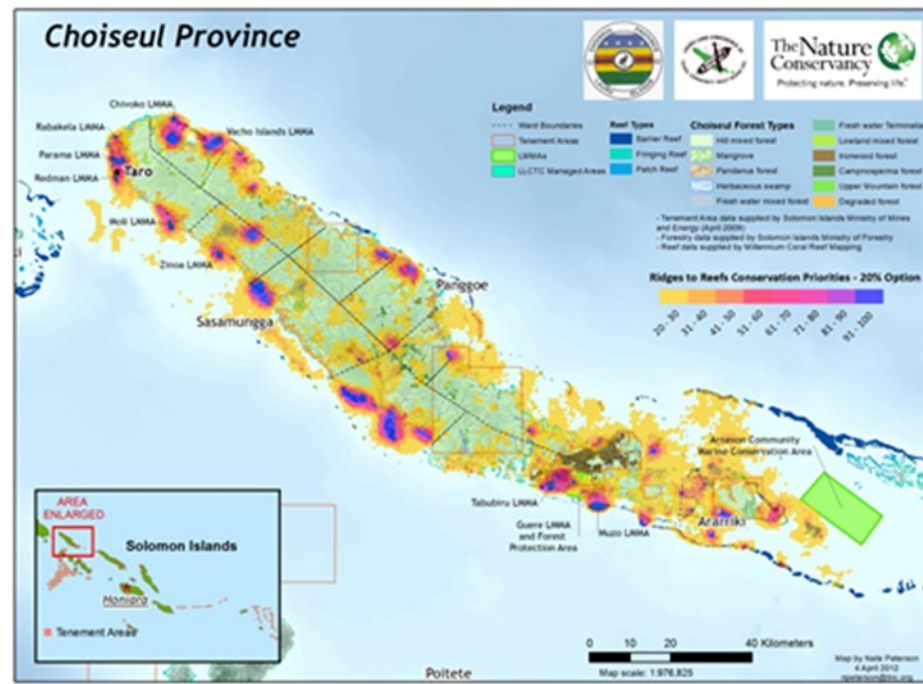


Choiseul Province

Ridges to Reef Conservation Plan

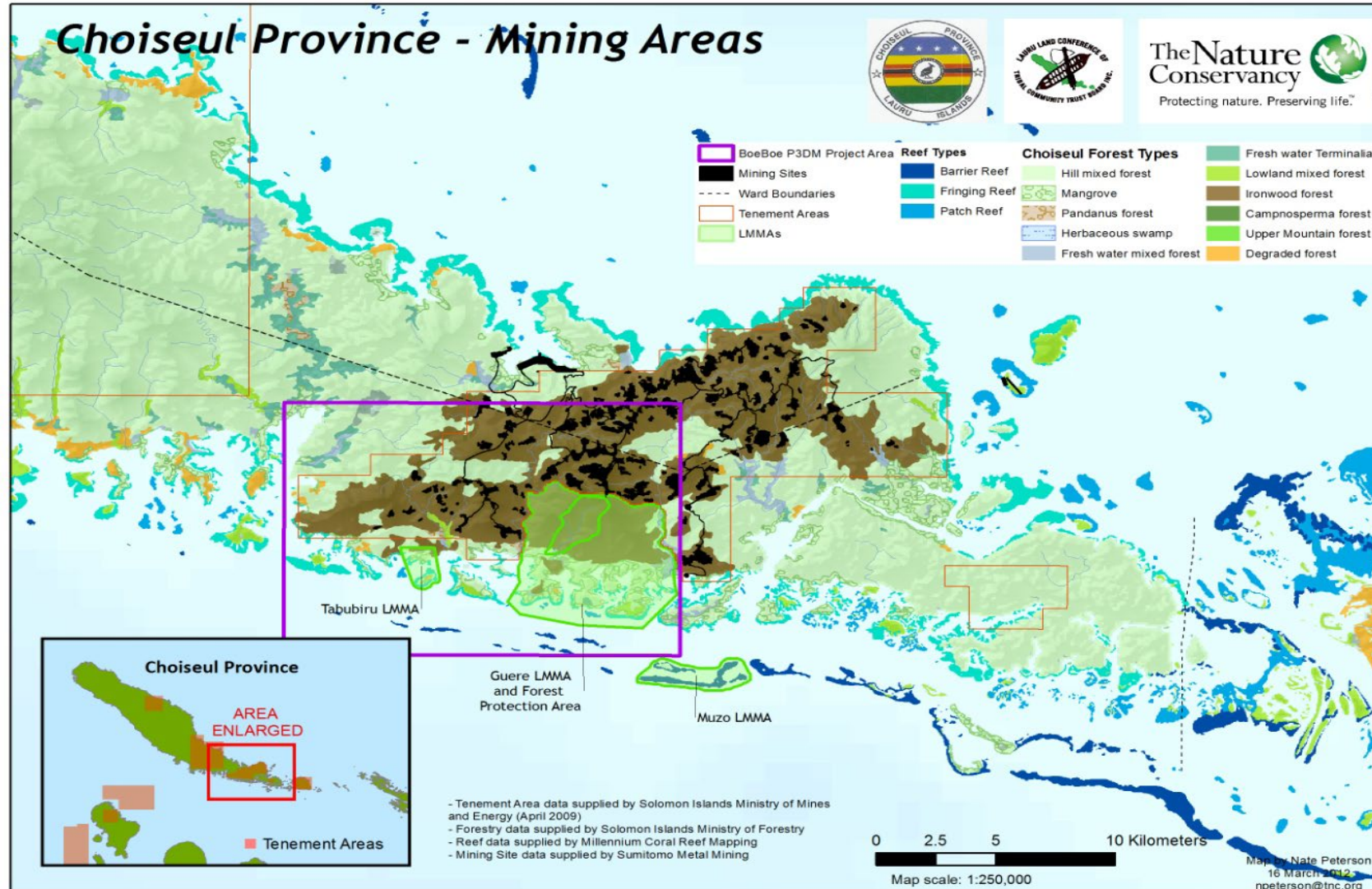


Tenement sites in Choiseul



Biodiversity and Tenement sites

A greater proportion of the rare and endemic ironwood species (*Xanthostemon melanoxylon*) that is found only in southern Choiseul and southern Isabel needs to be protected.



Gender Inclusive in Conservation



Arnavon Community Marine Park

- Established the First National Marine Park – (Protected Area Act) in the Country which supports the largest rookery for Hawksbill turtles in South Pacific

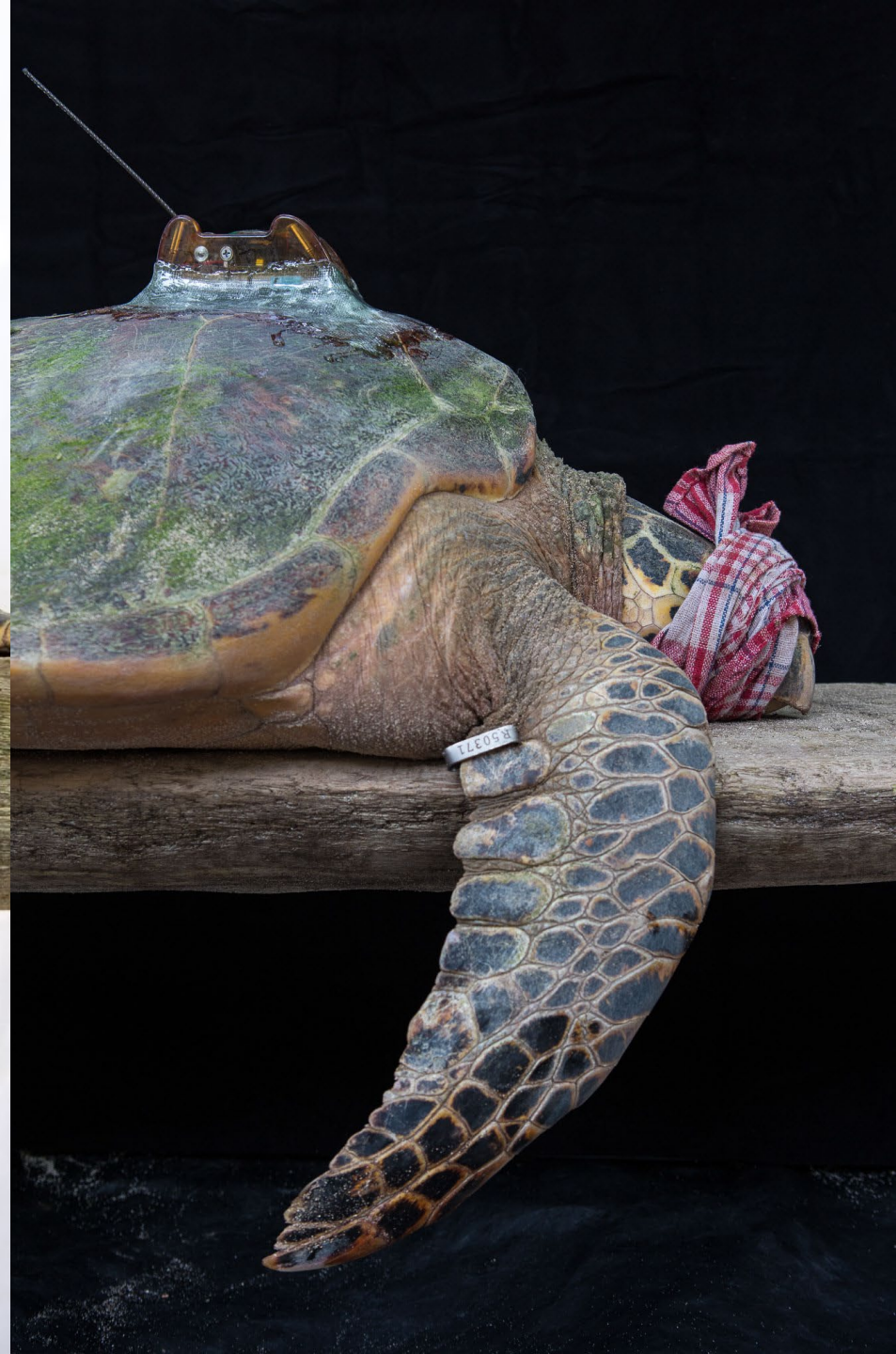


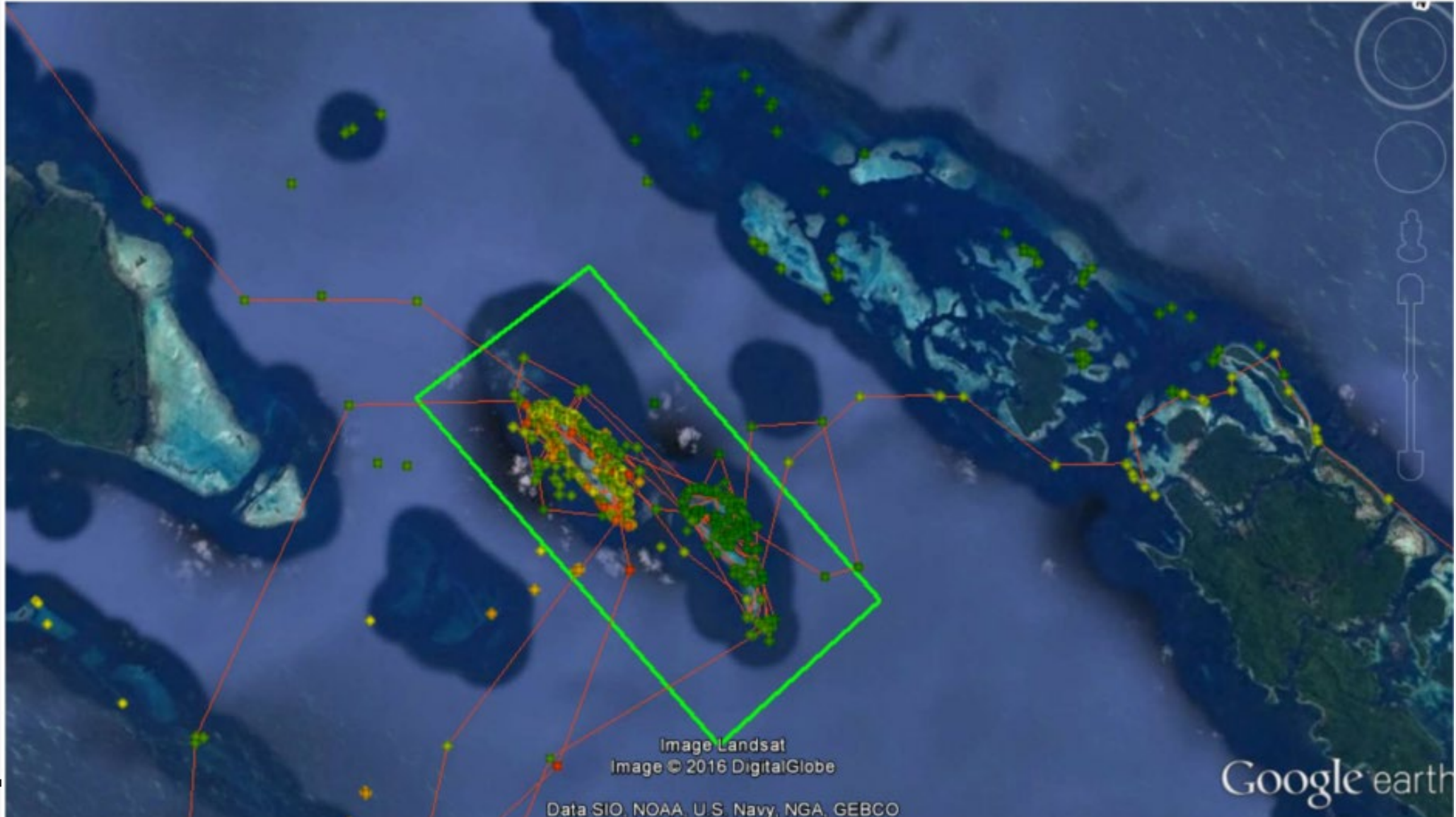
Satellite turtle tracking project

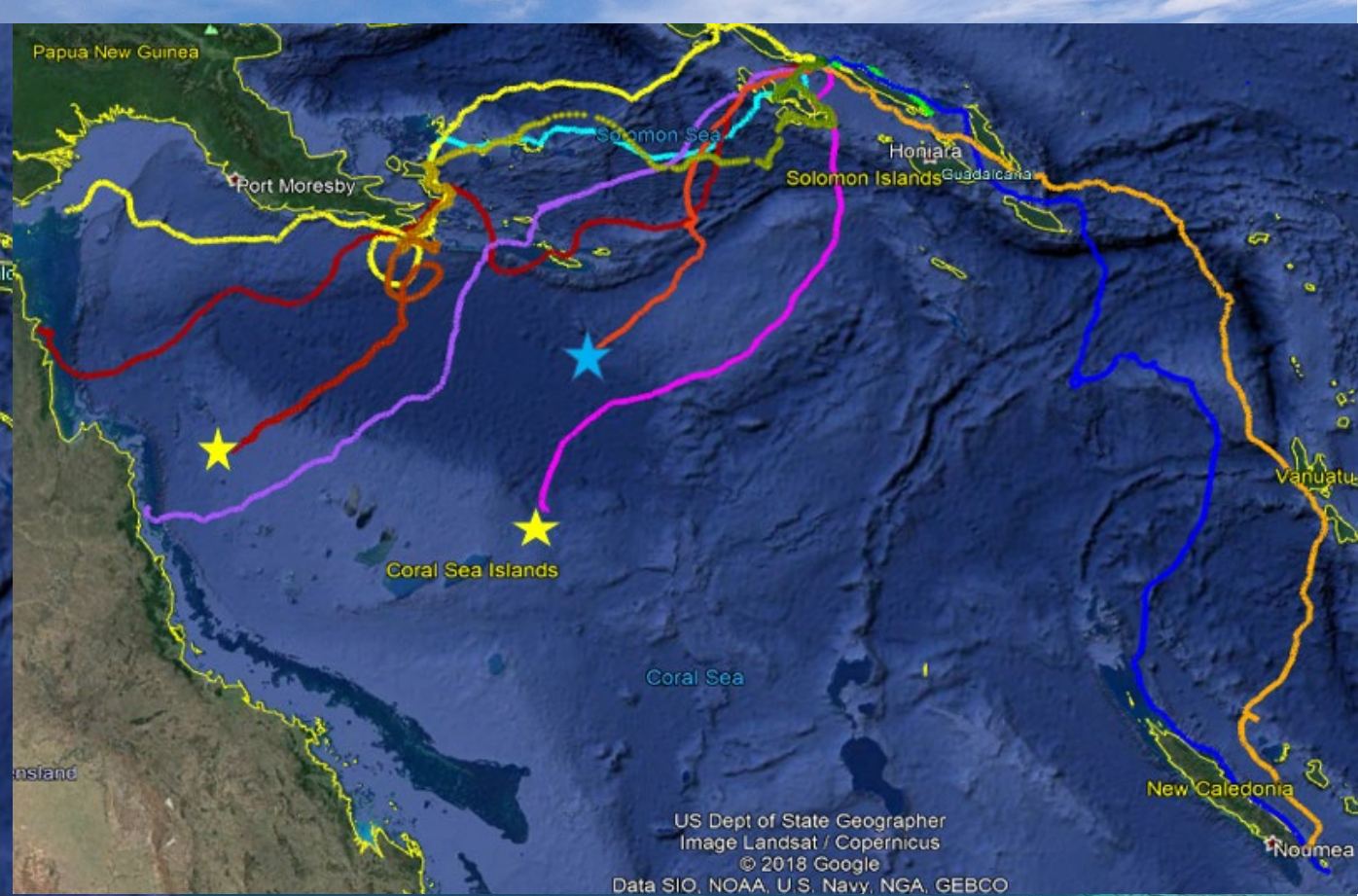
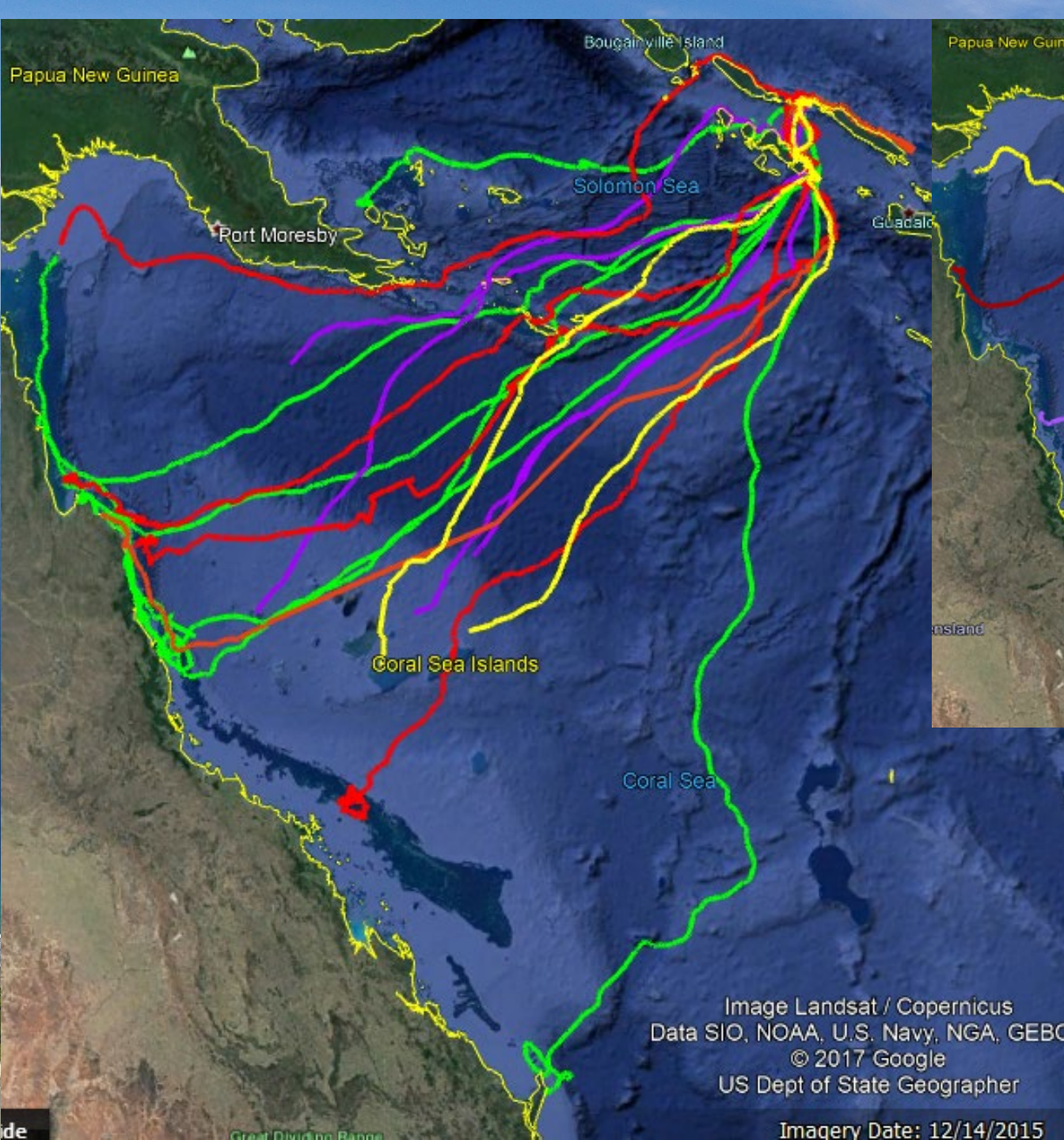


- Flipper tag migration histories (from the past 30 years)
- Nothing known on where turtles go while in Solomon Islands

- **See where nesting females go between laying clutches of eggs**
- **See if individual turtles nest on more than one beach**
- **See where turtles go back to after finishing their nesting**
- **Raise awareness on hawksbill and Leatherback turtles**

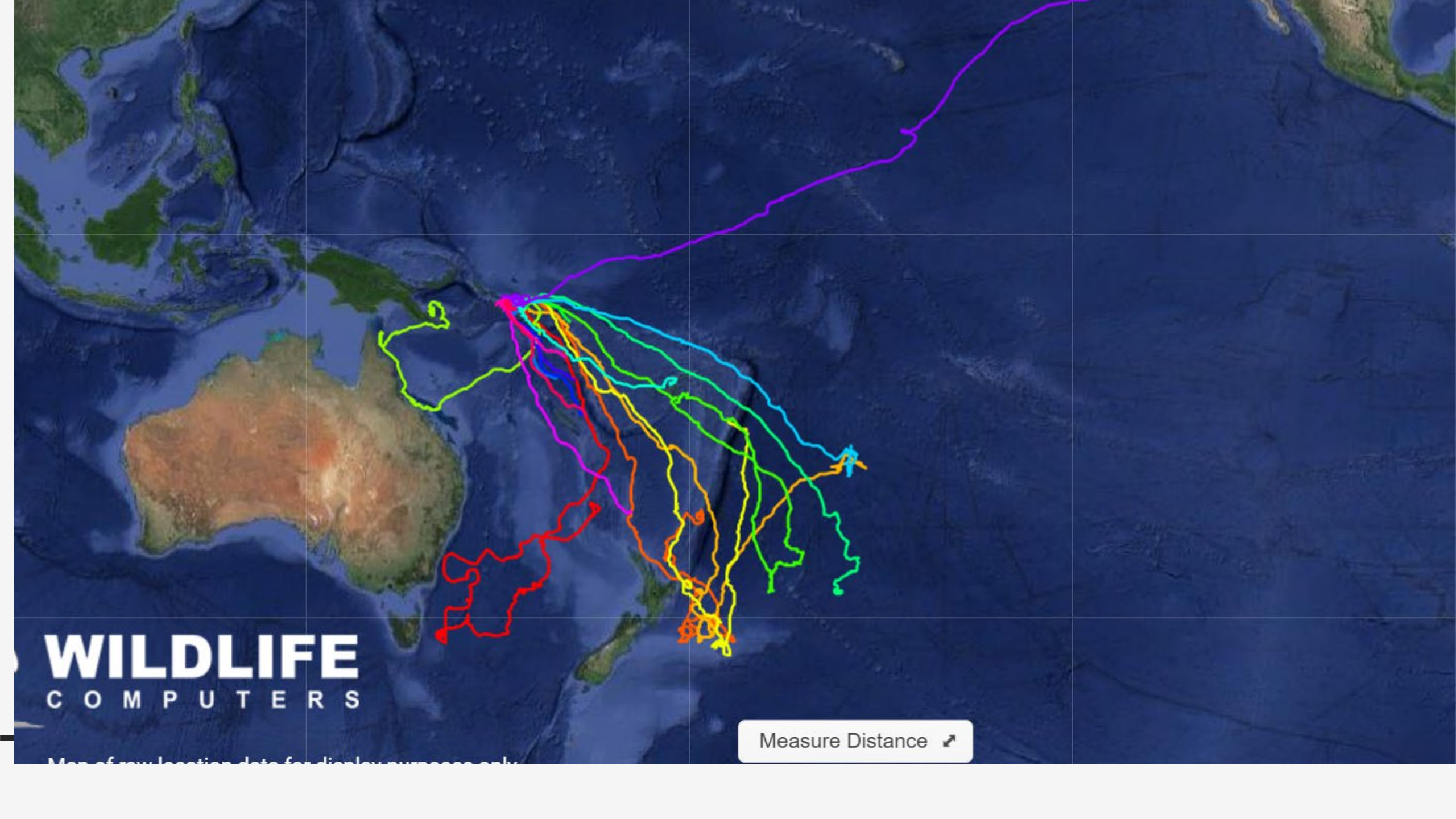






Leatherback



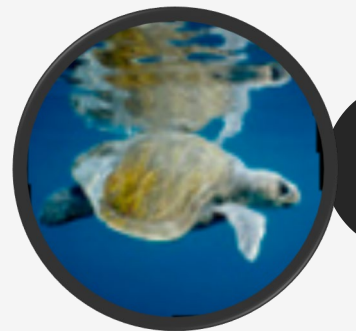
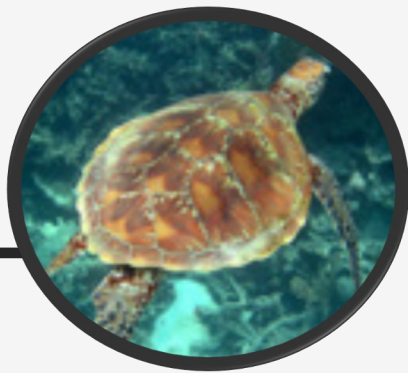


WILDLIFE
COMPUTERS

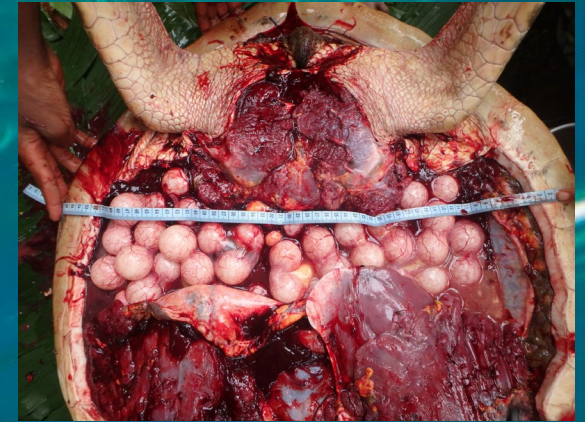
Measure Distance ↗

Map from location data for display purposes only.

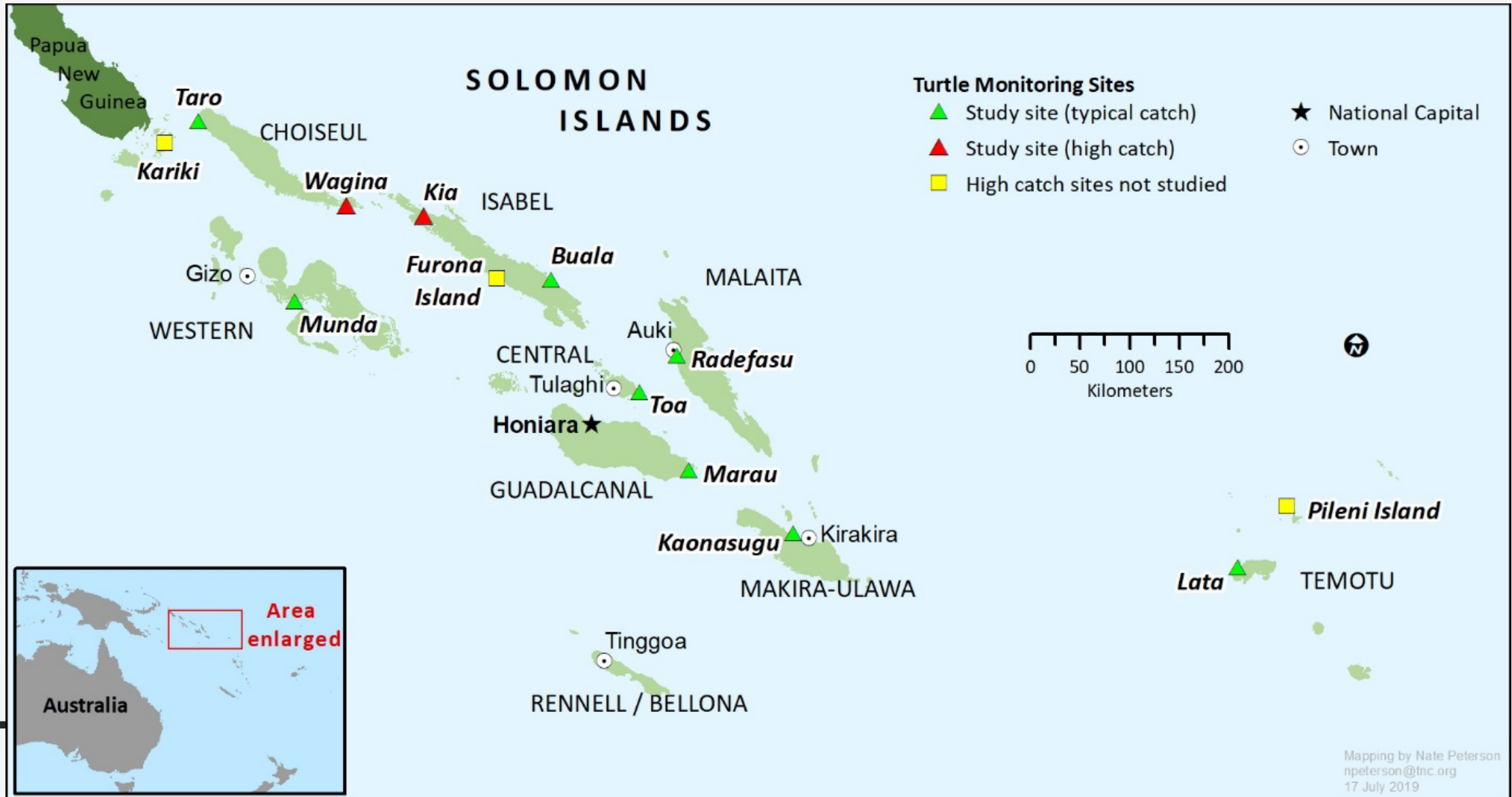
Examples of case studies



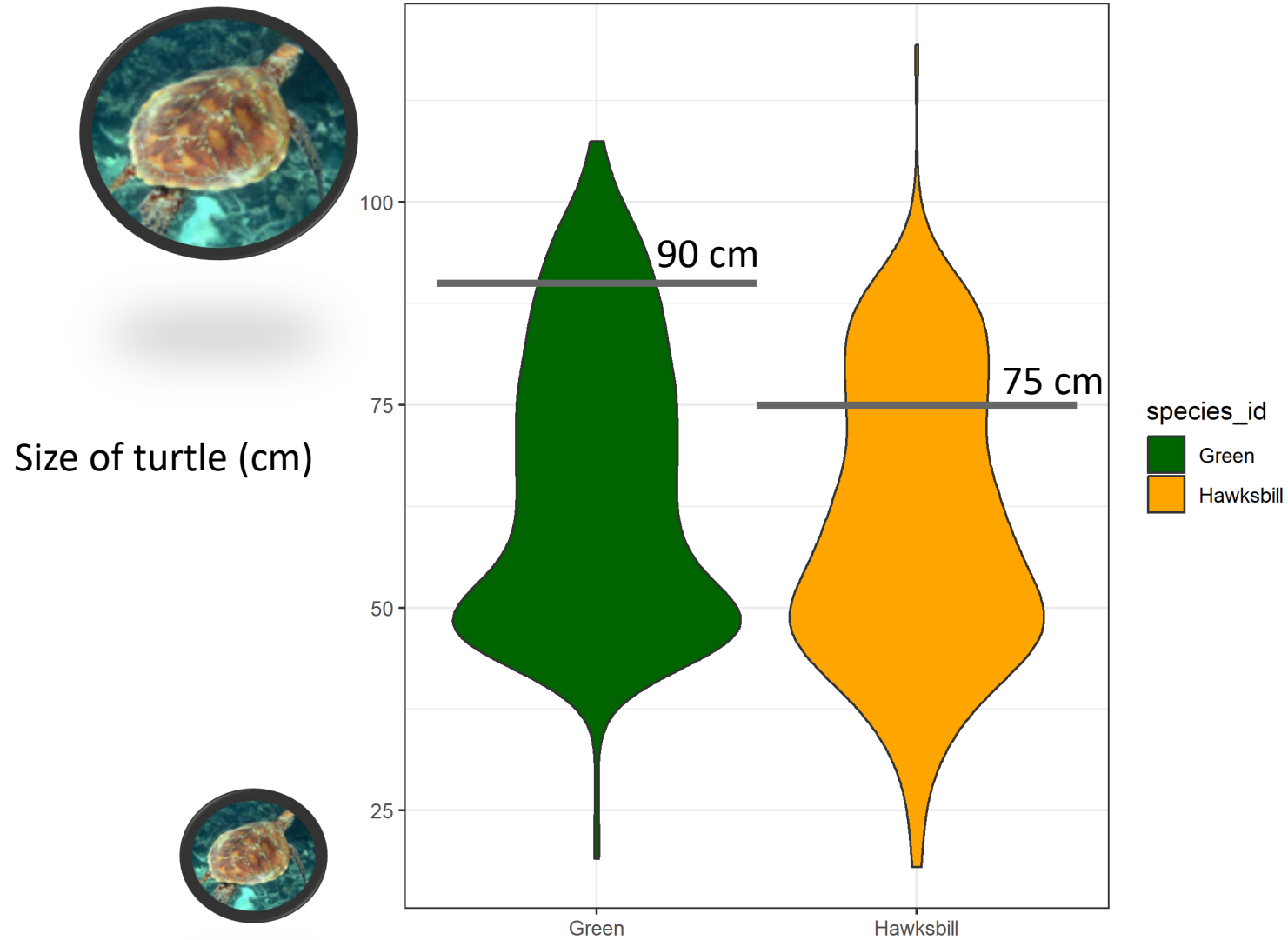
LEGAL AND ILLEGAL TURTLE HARVEST AND TRADE IN SOLOMON ISLANDS



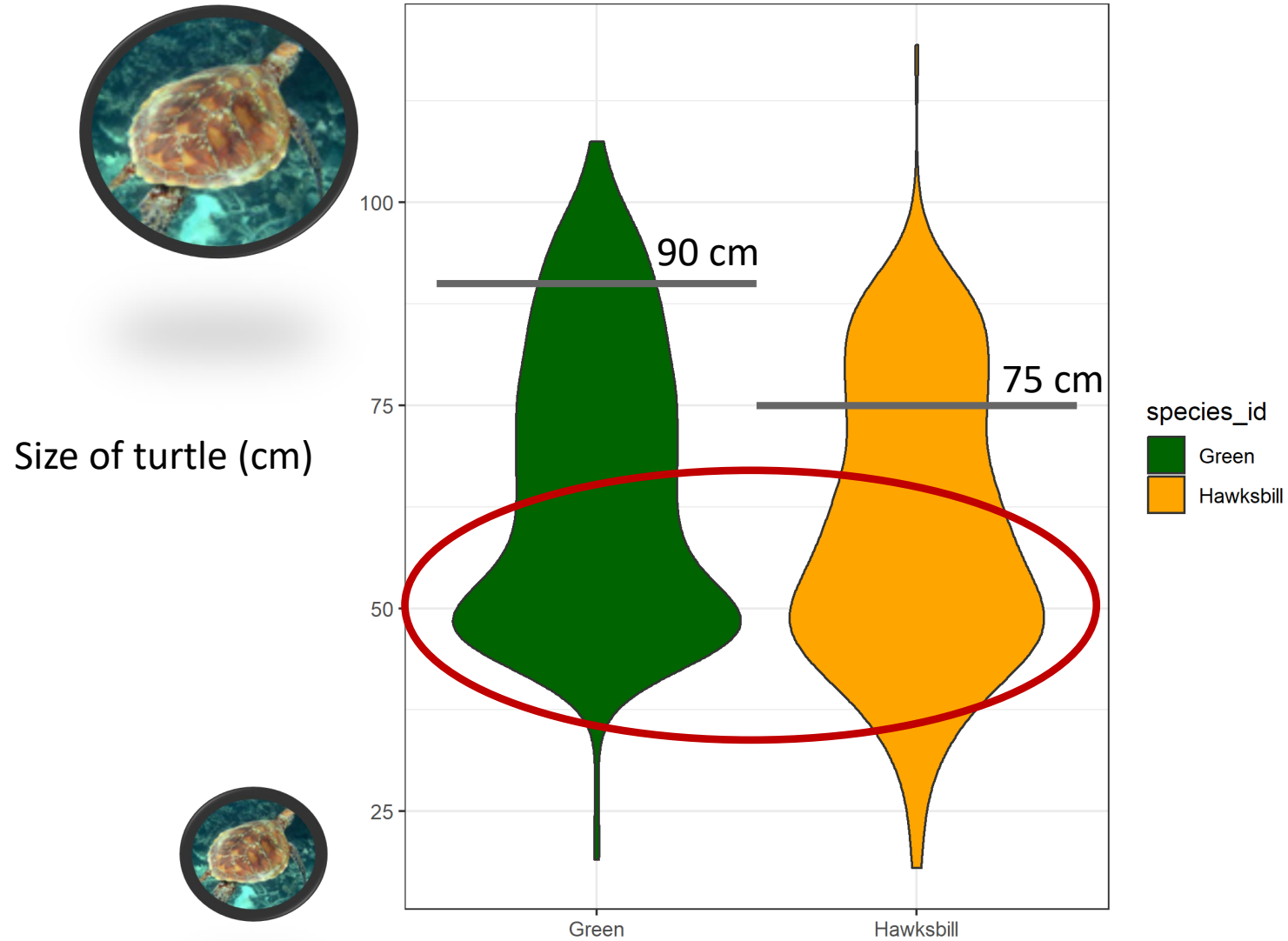
METHOD - STUDY AREA



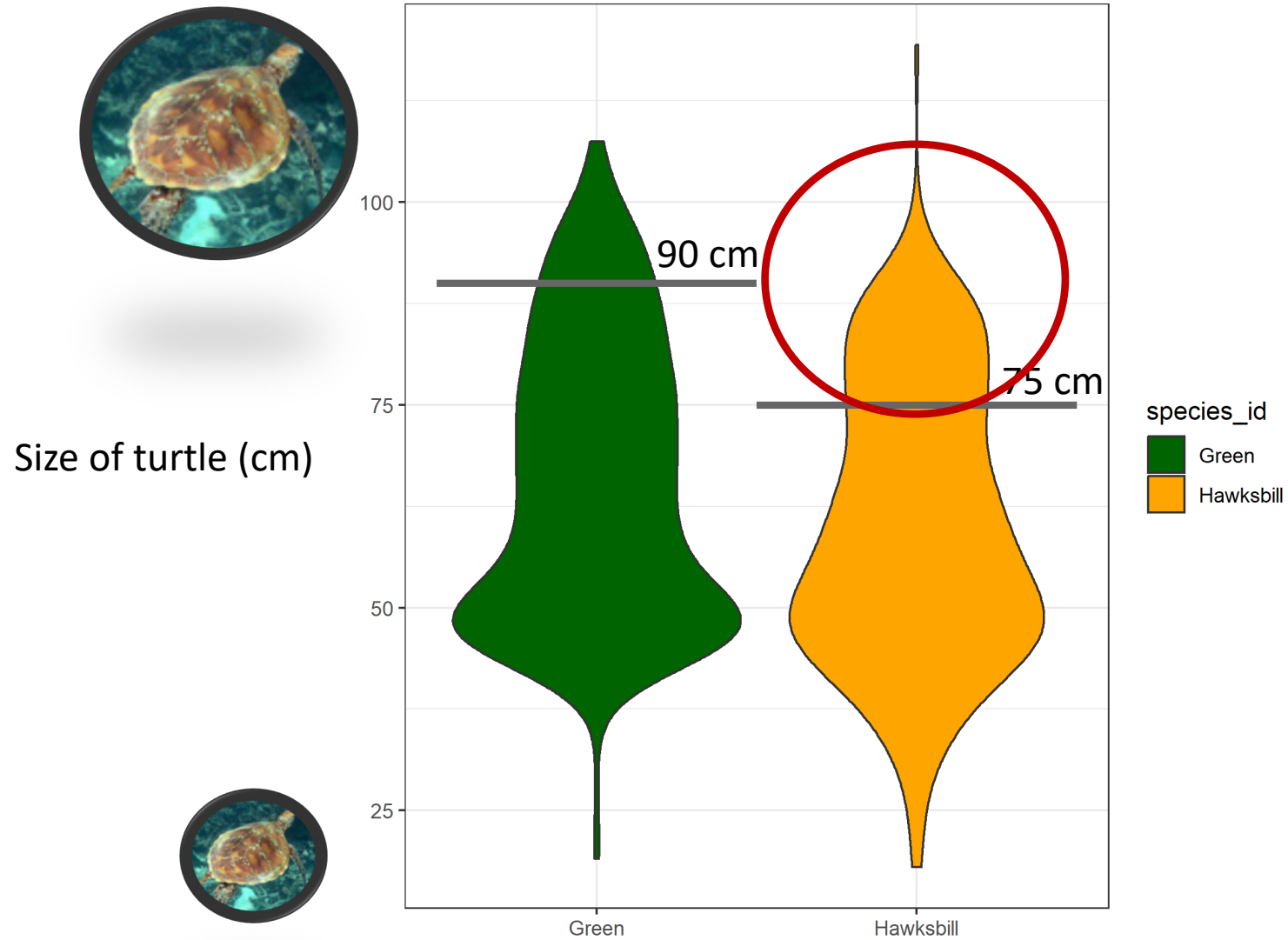
The size distribution of all turtle catches



The size distribution of all turtle catches



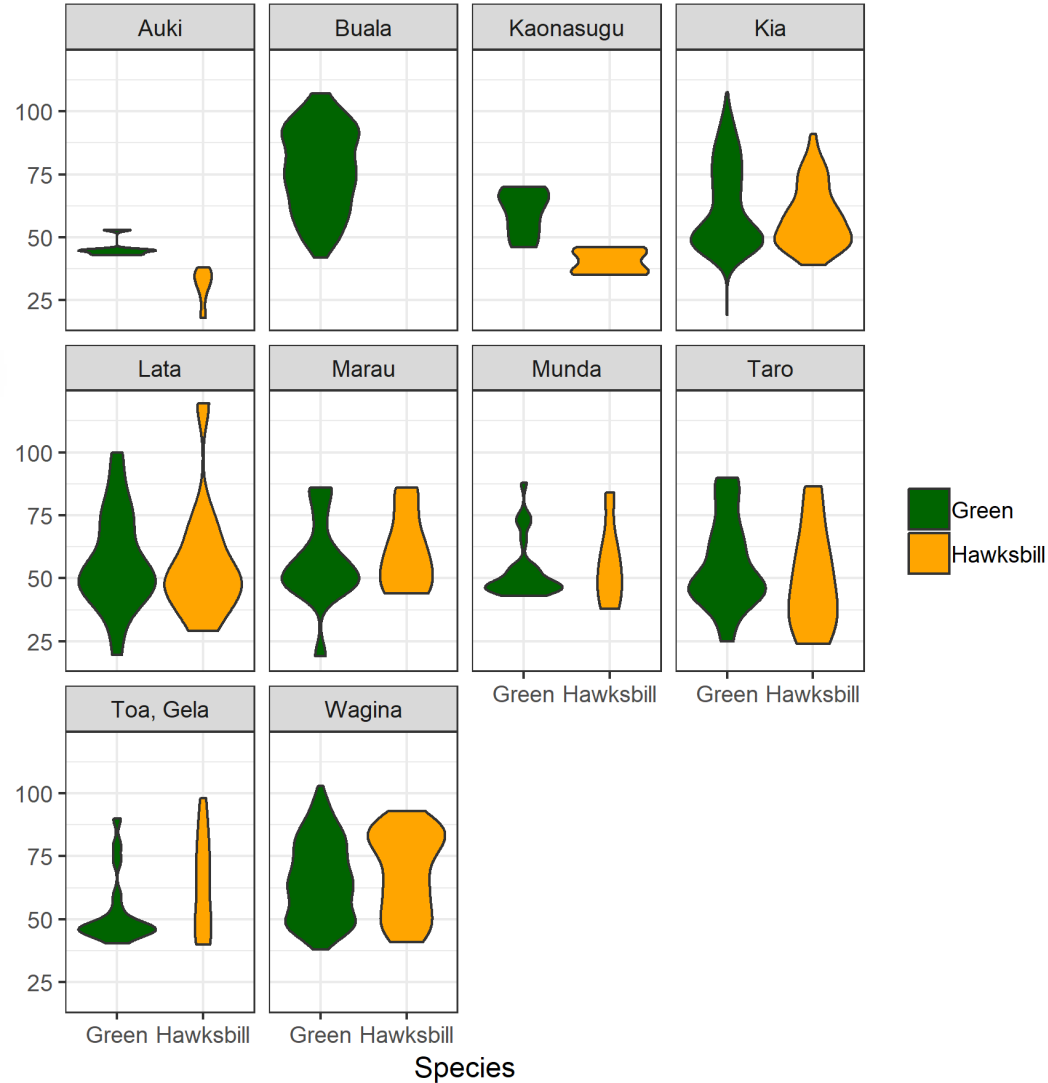
The size distribution of all turtle catches



The size distribution of all turtle catches by communities

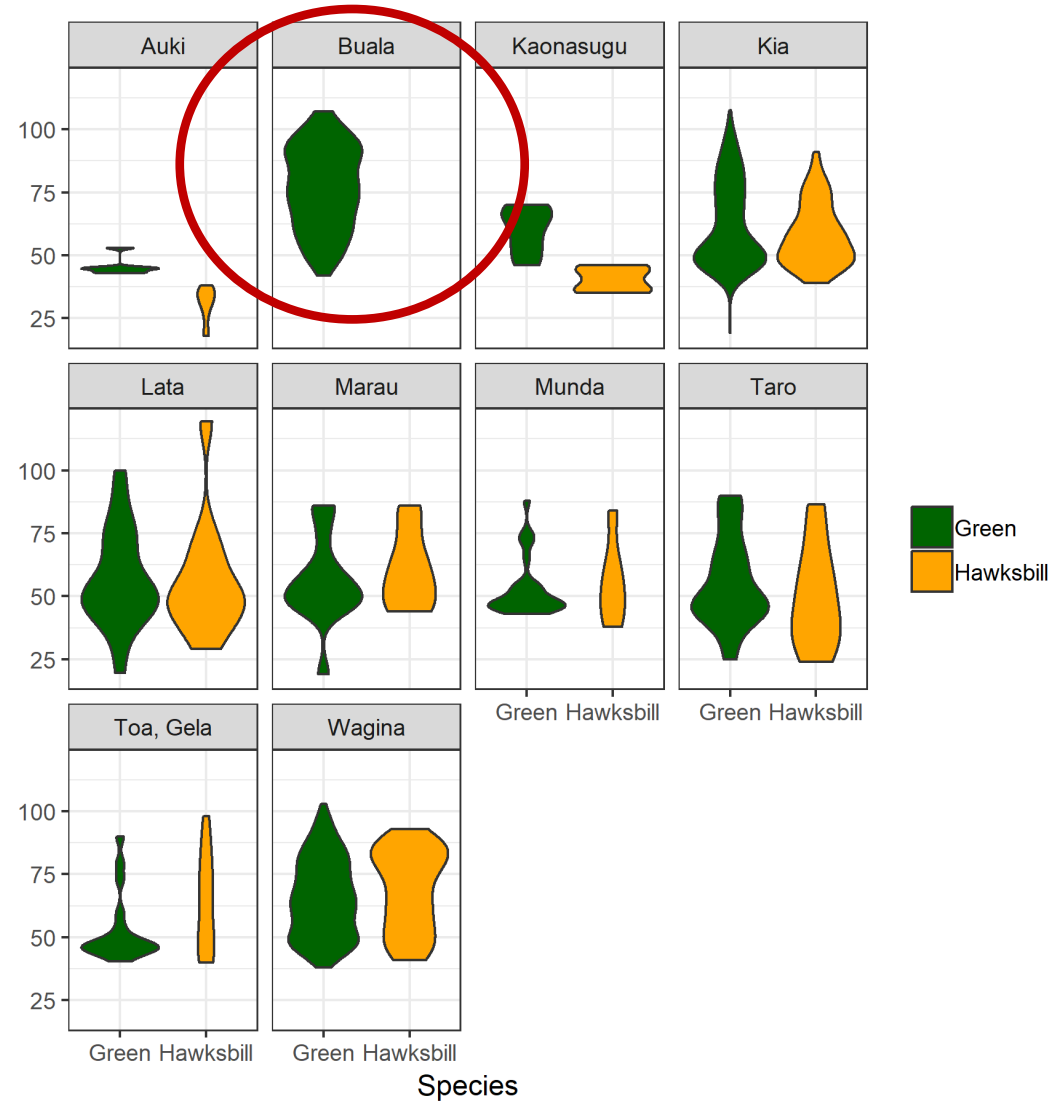


Size of turtle (cm)



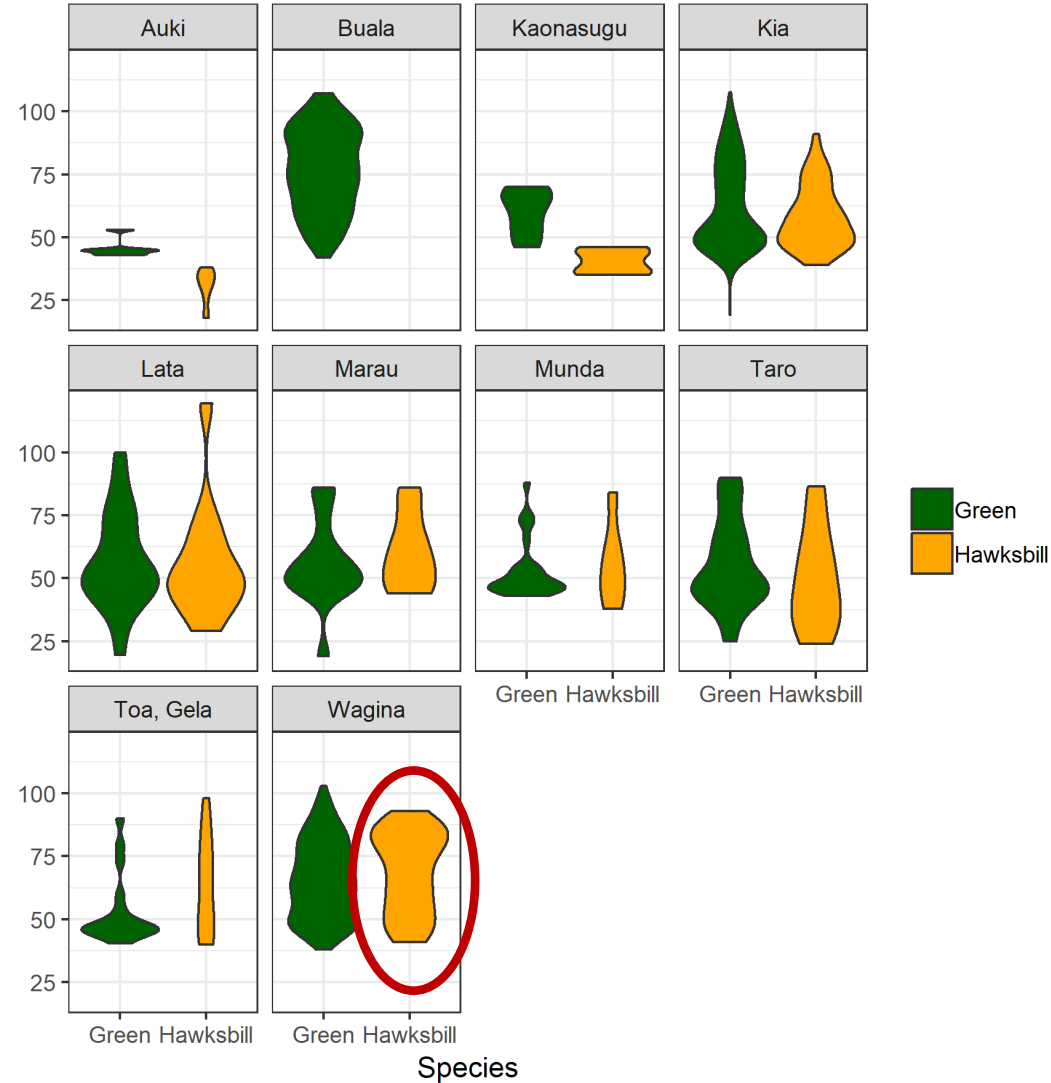
The size distribution of all turtle catches by communities

Size of turtle (cm)



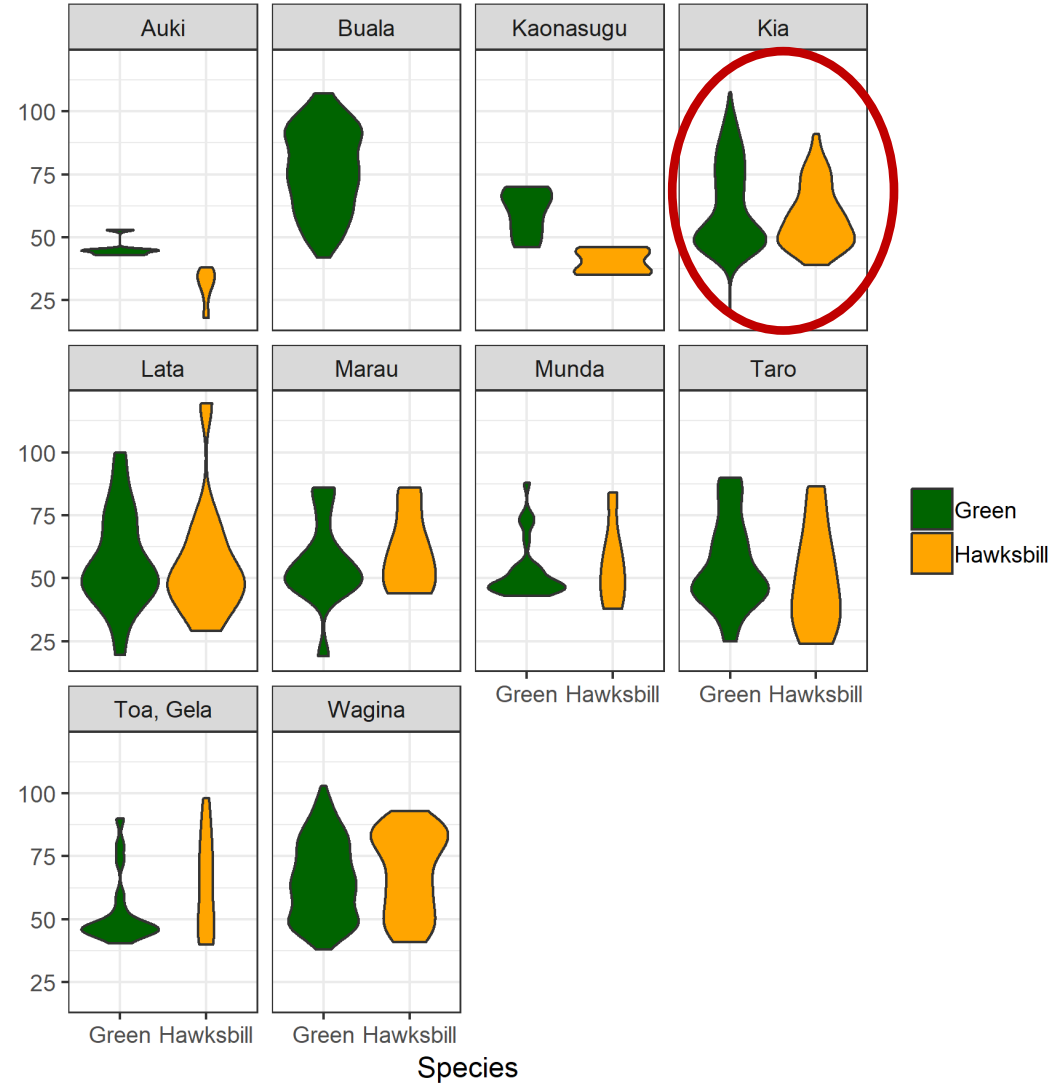
The size distribution of all turtle catches by communities

Size of turtle (cm)



The size distribution of all turtle catches by communities

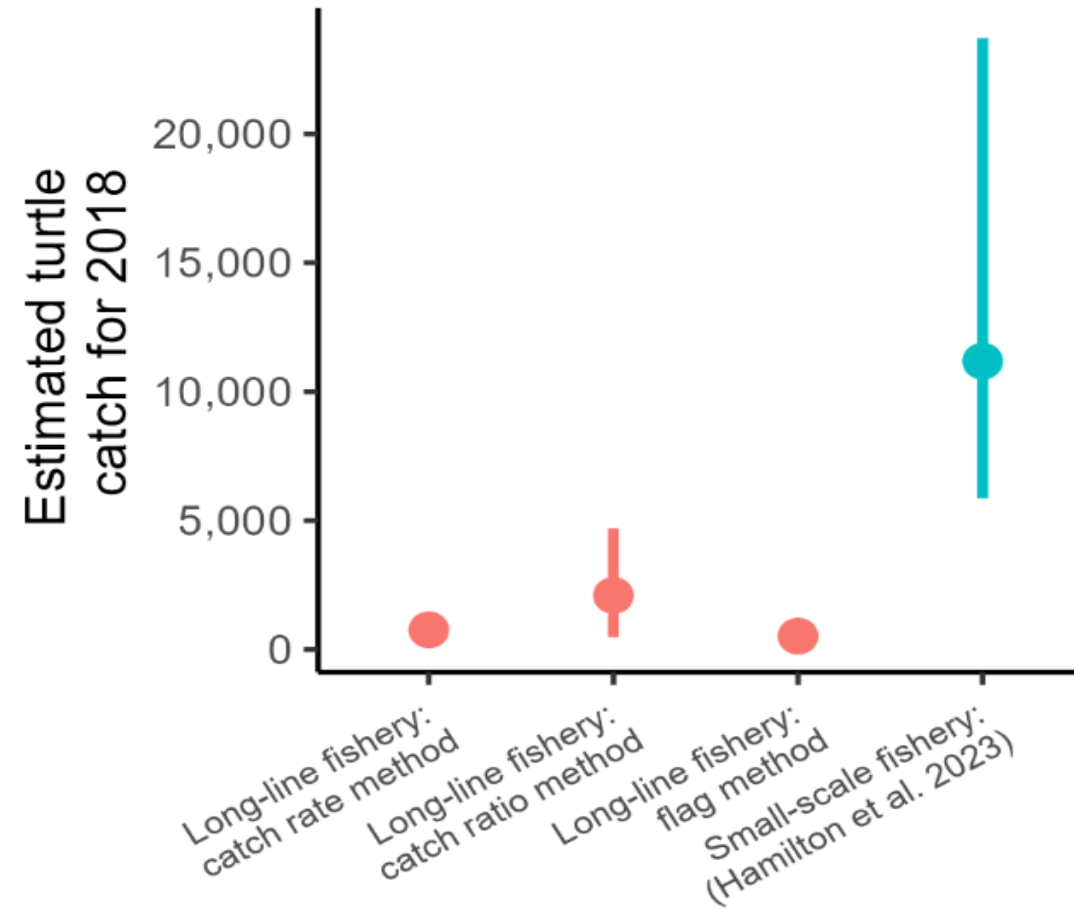
Size of turtle (cm)



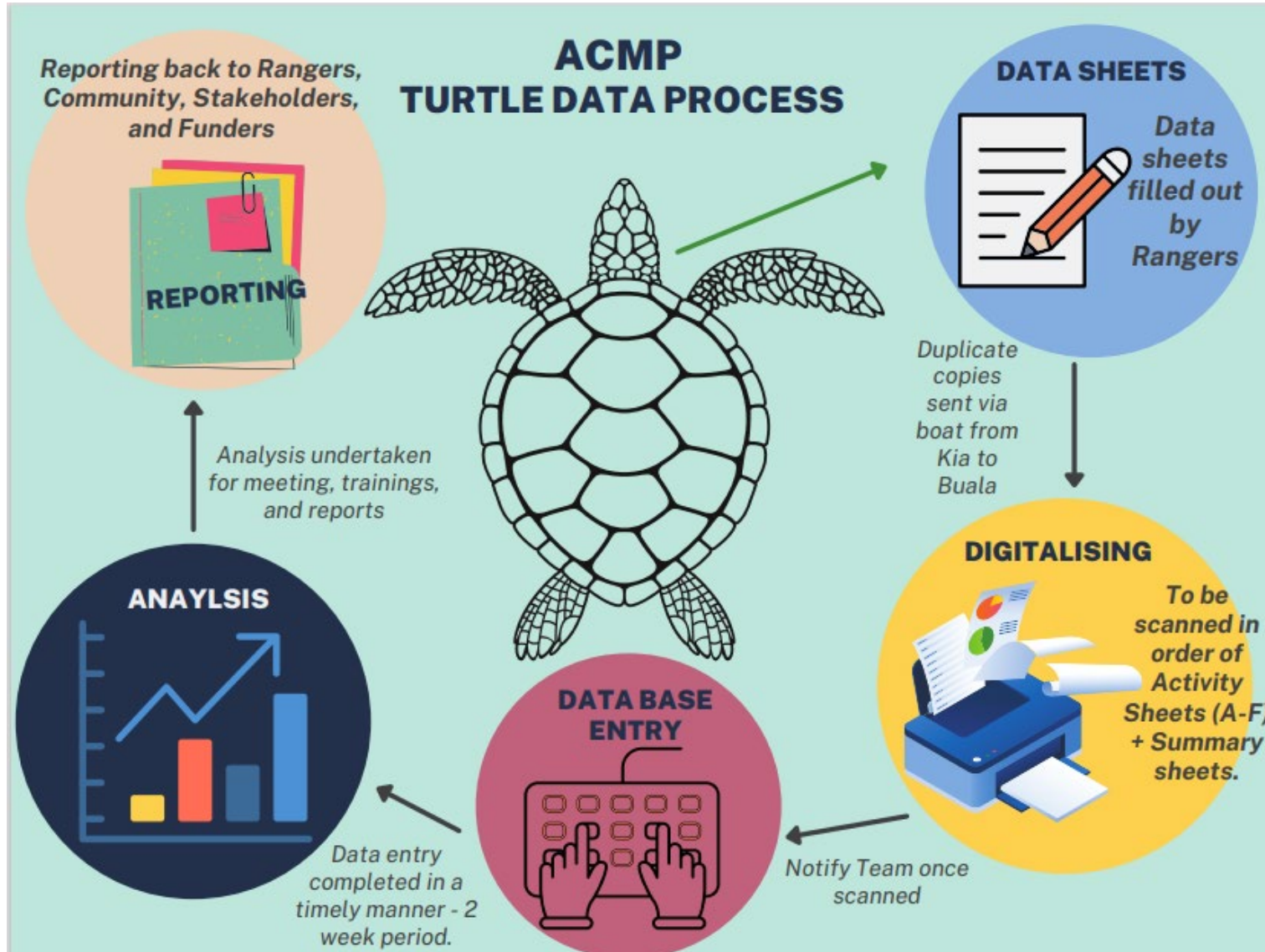
Catch hotspots



Annual catch comparison for SSF and LLF with different methods



Data Management Process



Challenges

- Priority of the Government of the day, to incorporate the findings into National Policy.
- Enforcement of Protected Area Regulations.
- Conservation vs Extractive Industries
- Customary Land tenure system (Land dispute)
- Sustainable Financing



*Thank you and
questions?*